

# NEW ZEALAND & AUSTRALIAN AMATEUR RADIO



# NEW ZEALAND & AUSTRALIAN AMATEUR RADIO MAGAZINE

Email: [ZL1GUD@proton.me](mailto:ZL1GUD@proton.me)

## So why a FREE Amateur Radio Magazine?

I enjoy writing and have had over a hundred articles published, (mostly on adventure and survival) and having been a radio amateur since around 1990 as ZR1XZT, then ZS1GD and now ZL1GUD I believe that the amateur radio scene needs a kick in the pants and needs to attract more (young) people.

New Zealand Amateur Radio magazine is free and includes Product News, International Amateur Radio News, DIY projects, Interviews, POTA and SOTA news and DX Expedition news. Club news is for the clubs and will not be included in the magazine.

If you want to be featured or have a project that you want to feature then email me the details and we will include it.

Greg  
ZL1GUD

## Copyright Disclaimer

All content in this magazine, including text, images, graphics, and other materials, is the property of the respective authors and creators and is protected by applicable copyright laws. While this magazine is distributed free of charge, all rights are reserved unless otherwise stated.

This magazine can be distributed to any interested amateurs and clubs.

The views expressed in this publication are those of the individual contributors and do not necessarily reflect the views of the publisher or editorial team.

If you believe any material in this magazine infringes your copyright, please contact us immediately at [ZL1GUD@proton.me](mailto:ZL1GUD@proton.me)

Note: Right click on text for link to website.

[www.thehamshack.co.nz](http://www.thehamshack.co.nz)

## This issue:

- Page 01 Introduction
- Page 02 Spiderbeam
- Page 03 From the Editor
- Page 04 Tokyo Ham Fair
- Page 06 DX On Air
- Page 07 Scarborough Reef
- Page 08 Bouvet Island
- Page 10 YLs
- Page 11 Nets and Contests
- Page 12 Chris Hattan
- Page 13 Spiderbeam Poles
- Page 14 NEW Yaesu FTM310
- Page 15 The OZ POTA Scene
- Page 16 NEW Icom 7300 MKii
- Page 18 NEW Icom ID 5200
- Page 19 Alinco NZ
- Page 20 NEW Kenwood
- Page 21 Home Brew
- Page 22 Technical
- Page 23 Morse Code
- Page 24 POTA Matt ZL4NVW
- Page 29 Band Reports
- Page 30 Wallaby Surprise
- Page 31 Portable Ops.
- Page 32 Africa Correspondent
- Page 33 Big Antennas
- Page 34 QSL
- Page 35 Why POTA
- Page 36 OZZIE Hamfests
- Page 37 Fun
- Page 38 Sugarloaf
- Page 39 Adventures of ZL1HIM
- Page 40 For Sale & Wanted





# spiderbeam

high performance lightweight antennas

The ship docks on the 19<sup>th</sup> of September with half a ton of stock  
[www.thehamshack.co.nz](http://www.thehamshack.co.nz) NZ Distributor

**LOTS OF STOCK**

50% of the antennas have been pre-sold!



Pre-Assembled or kit options

[www.thehamshack.co.nz](http://www.thehamshack.co.nz)



## From the Editor

Wow, three months have gone by since I decided to start the magazine.

It is now read in New Zealand, Australia, Holland, UK, Portugal and South Africa. Reaction has been very positive and more and more amateurs have expressed interest in submitting articles from all over the world.

As you all probably know I own [www.thehamshack.co.nz](http://www.thehamshack.co.nz) which I started three months ago and we are now selling to Australian amateurs as well. Our Alinco stock is all here, so let us know if you are interested in anything.

My weekends consist of the regular POTA activations, while it is getting difficult finding "virgin" parks that have not yet been activated it makes it more fun.

The end of August saw Nick ZL2NEB, Phil ZL3PAE and myself ZL1GUD off on a three day mass activation adventure in Canterbury. Nick and I have spoken on the phone many times but we have never done an activation together so this was a great opportunity.

I am still running my Yaesu FT891 for POTA with a variety on antennas, I love my linked dipole but when time is an issue the EFHW is my goto antenna. Lately we are finding a lot of Domains have locked gates and it involves detours to drive the other boundaries to see if there is access which often leaves only minutes to set up.

Last Saturday was my first "Karen" experience when I was interrogated near an equestrian centre (in a public domain).

73's

Greg



View from our Arthur's Pass activation

[www.thehamshack.co.nz](http://www.thehamshack.co.nz)



# Tokyo -JARL Ham Fair 2025



The biggest event in Japanese amateur radio is the Ham Fair. This year 45,000 people attended.

- JARL HAM Fair is held to promote healthy development of amateur radio and improvement of technology. There are exhibitions and events for introducing amateur radio to general public, exchanging the information and establishing friendship between amateurs.
- It will be the 47th JARL HAM Fair. The theme is "Take off to the World of Amateur Radio at Ariake "

Photographs used with permission of Jim Tittsler 7J1AJH/AI8A



[www.thehamshack.co.nz](http://www.thehamshack.co.nz)



Yaesu's play area



Kenwood are bringing back the TS-990



Alinco's display



Icom - see later reviews



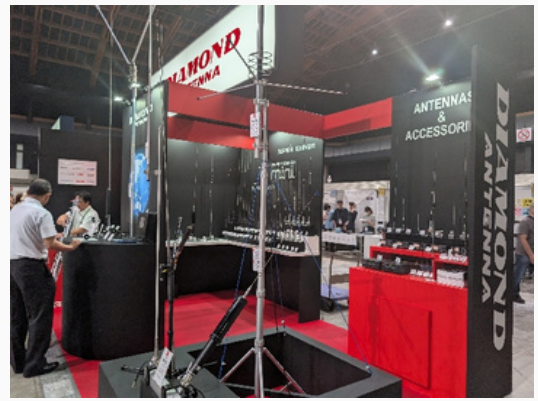
Home Brew Competition



Azden Amplifiers



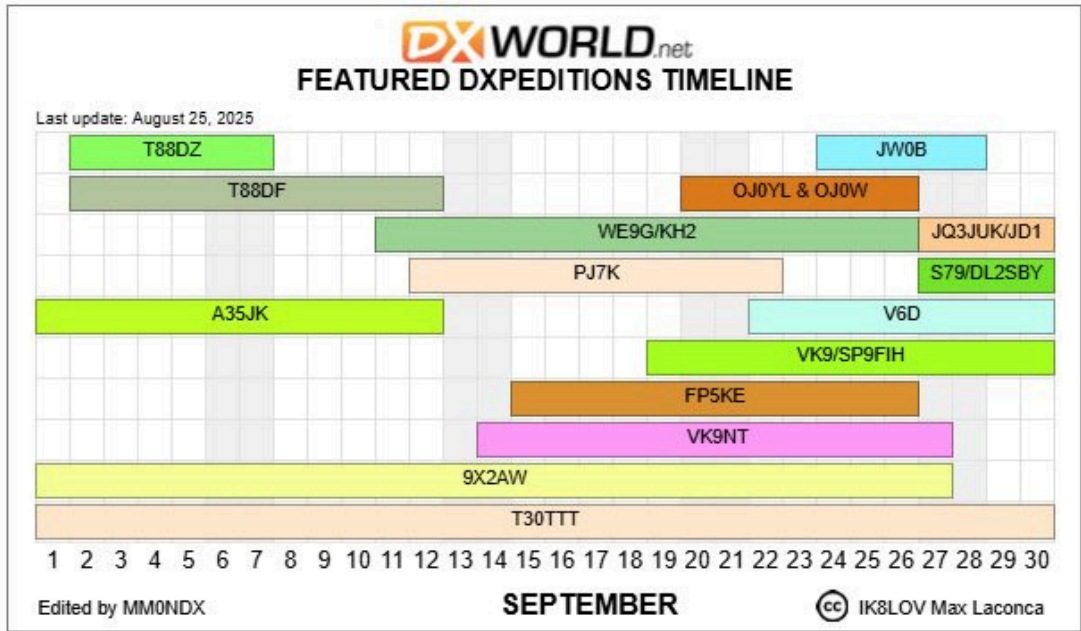
POTA Japan



Diamond Japan

[www.thehamshack.co.nz](http://www.thehamshack.co.nz)

# ONLINE AIR



CQ Zone 22 • ITU Zone 41 • Loc. MK60cu • IOTA AS 011 • Agatti 🇮🇳

# VU7T

*Lakshadweep Islands*

Fahad VU3FFB • Ram VU2JXN • Gopan VU3HPF (M0XUU) **QO-100 DX Club**

Courtesy of DXworld.net



[www.thehamshack.co.nz](http://www.thehamshack.co.nz)





## BS7H - Scarborough Reef 20m SSB - OH2BH

Not so many people know where this iconic recording originated from, but it was made by [DX-World](#) in May 2007.

At the time, a few websites and blogs used the recording and passed it off as their own; it was in actual fact recorded in Central Scotland using camera / phone and a Kenwood TS-570

<https://audio.com/.../bs7h-scarborough-reef-20m-ssb-oh2bh...>

**Note the date: CQ Worldwide DX Contest October 24 - 26<sup>th</sup> 2025**

Courtesy of DX-world.net

## DXpedition 3Y0K, Bouvet Island



Preparations for the DXpedition 3Y0K, Bouvet Island are in full swing. We wish the team much success in their future planning!

The DXpedition is taking place in February 2026 with Icom being the premier sponsor

- We will stay up to 3 weeks around the island
- Team of 18-24 operators
- Budget U\$1,675,000

<https://3y0k.com>



[www.thehamshack.co.nz](http://www.thehamshack.co.nz)





# 3Y0K - Bouvet Island February 2026

## 3YØK DXpedition to Bouvet Island, February 2026

ClubLog #10 most wanted DXCC entity  
Dependency of Norway in South Atlantic Ocean  
Volcanic origin, 49 km<sup>2</sup>, 93% covered by glacier  
The most remote uninhabited island on Earth  
Check Bouvet Island history here:  
<https://www.npolar.no/en/themes/bouvetoya/>

We are pleased to announce our newest 3Y0K team member, Max Freedman, N4ML!  
Max is 21 years old and has been licensed since 2015 and became an Amateur Extra in 2023.  
He is active on HF chasing DX and contesting and can be heard from the ARRL HQ station W1HQ as Max works for the ARRL as a support specialist / education and learning.

We and Max thank the Northern California DX Foundation ([NCDXF](https://www.ncdxf.com/)) for their commitment to the support of youth joining the DXpedition community by covering his team fee for Bouvet 2026.

This is a milestone opportunity for Max – likely the youngest person ever to be part of an expedition such as this one.

May 2025 News Update The latest press release:  
ICOM is now a Premier Sponsor for the February 2026 DXpedition to Bouvet Island with the callsign 3Y0K ([www.3y0k.com](http://www.3y0k.com))

ICOM has provided an incredible amount of equipment for this complex project:  
12 x Icom 7610 top-of-the-line HF radio ( <https://www.icomamerica.com/lineup/products/IC-7610/> )  
4 x Icom 7300 HF small footprint radio ( <https://www.icomamerica.com/lineup/products/IC-7300/> )  
1 x Icom 9700 VHF/UHF for QO-100 satellite ( <https://www.icomamerica.com/lineup/products/IC-9700/> )  
Icom IC-M25 marine VHF radios ( <https://www.icomamerica.com/lineup/products/IC-M25/> )  
Icom IC-SAT100 satellite push-to-talk radios ( <https://www.icomamerica.com/lineup/products/IC-SAT100/> )

3Y0K is a project aiming to land 24 amateur radio operators on 2 separate camps, by helicopter, on Bouvet Island. The team will use the Icom VHF radios to stay in contact with the vessel, the helicopter pilots and the two separate operating camps.

The Icom satellite radios would be used to connect with the vessel, the 2 separate camps and also with the NA and EU pilots in New York and Norway.

The team will travel to Bouvet Island using an Icelandic icebreaker starting from Cape Town, South Africa on February 1, 2026

Bouvet Island is an uninhabited remote Norwegian territory located in the South Atlantic Ocean and it is covered 93% by ice.

Bouvet is currently #10 on the ClubLog Most Wanted DXCC list

Please support this complex project by going to the DXpedition website and donate via Credit Card or PayPal:  
<http://www.3Y0K.com>



[www.thehamshack.co.nz](http://www.thehamshack.co.nz)





# 3YOK - Bouvet Island February 2026

We are developing a team of international expeditioners and youth members

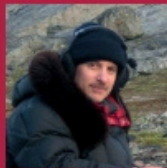
Click on a photo to visit the team member's QRZ page



Team lead Ken LA7GIA



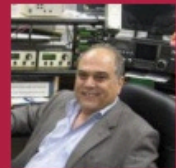
Co-leader Adrian KO8SCA



Co-leader Cezar VE3LYC



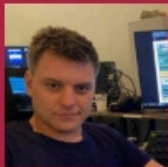
Co-leader Dennis KT8X



Equipment & Antenna lead  
Krassy K1LZ



Installation lead Roman  
RN5M



Installation lead Manu  
LU9ESD



Installation lead Velimir  
K3JO



Chak JT1CO



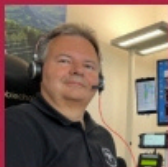
Donato IK2EGL



Vadym UT6UD



Gudmi TF3SG



Wolfgang HB9RYZ



Vlad OK2WX



John F5VHQ



Bob W9AP



Greg KP4PK



Stian LB5SH



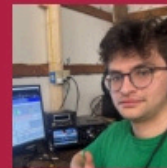
Alex DL2ALY



James W7EY



Regin OY1R



Max N4ML



Open

## Global Pilots



James, KB2FMH - Lead  
Pilot, Media, Marketing



Antonio, I8KHC - EU South



Champ, E21EIC - Asia



Morten, LA3MHA -  
Scandinavia



Manu, F8FKI - EU West



Joe, JJ3PRT, JA / Pacific

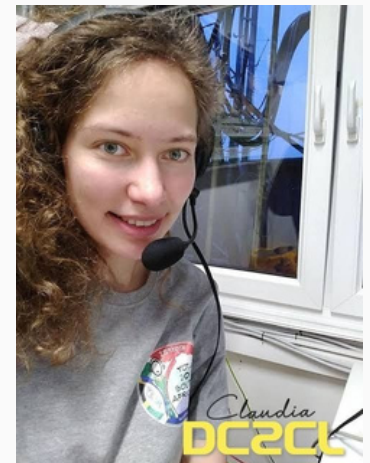


www.thehamshack.co.nz





## YL's Radio Amateurs

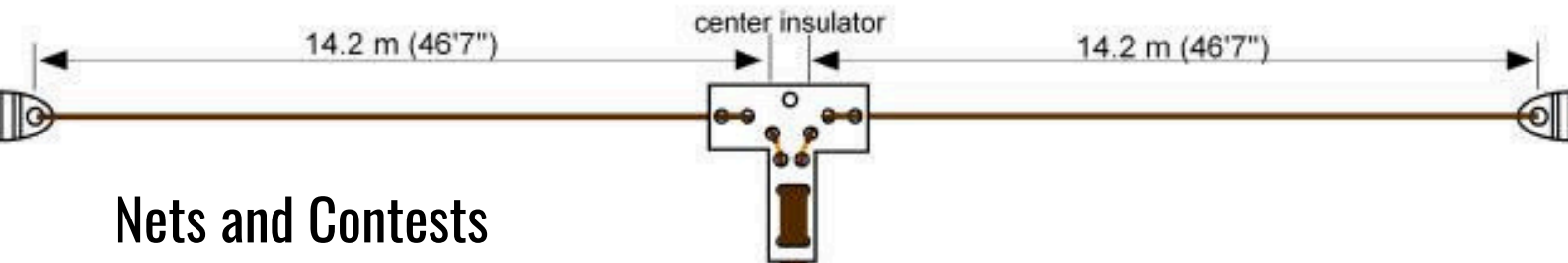


### Women In Amateur Radio

Amateur Radio Is A Hobby For Men And Women

Amateur Radio is a communications hobby that throughout its history has been dominated by men, well times are changing and more and more women are becoming involved in the varied aspects of the hobby.

[www.thehamshack.co.nz](http://www.thehamshack.co.nz)



# Nets and Contests

## HF SSB Nets

**AREC Section Leaders** - 3900 kHz USB, 3rd Monday of each month at 2020 NZT

**Alpine Fault Net** - First Sunday of each month on 7115 kHz LSB at 0930 NZT and on 3605 kHz LSB at 2030 NZT.

**NZART Branch 03 Auckland Western Suburbs** - 3650 kHz, Fridays at 2000 NZT

**NZART Branch 05 Christchurch** - 3650 kHz, Mon-Fri at 1600 NZT

**NZART Branch 10 Franklin** - 3700 kHz, Sundays at 0900 NZT

**NZART Branch 12 Hamilton** - 3579 kHz, Mondays at 1930 NZT

**NZART Branch 16 Horowhenua** - 3720 kHz, Wednesdays at 2030 NZT

**NZART Branch 18 Hutt Valley** - 7075 kHz, Sundays at 0900 NZT

**NZART Branch 20 Manawatu** - 3570 kHz, Sundays at 0900 NZT

**NZART Branch 22 Marlborough** - 3876 kHz, Tuesdays & Saturdays at 2030 NZT

**NZART Branch 26 Nelson** - 3890 kHz, Sundays at 0900 NZT

**NZART Branch 27 New Plymouth** - 3660/7120 kHz, 1st of each month at 2030 NZT

**NZART Branch 28 Whangarei** - 3585 kHz, Sundays at 2030 NZT

**NZART Branch 30 Otago** - 3613 kHz, 1st Monday at 2000 NZT

**NZART Branch 35 South Otago** - 3585 kHz, Mondays at 2030 NZT

**NZART Branch 41 Thames** - 3850 kHz, Sundays at 0900 NZT

**NZART Branch 42 Titahi Bay** - 3710 kHz, Sundays at 2000 NZT

**NZART Branch 50 Wellington** - 7050 kHz, Sundays at 0930 NZT

**NZART Branch 53 Te Puke** - 3690 kHz, Sundays at 0830 NZT

**NZART Branch 61 Central Otago** - 3600 kHz, 2nd Thursday at 2000 NZT

**NZART Branch 62 Reefton-Buller** - 3600 kHz, Saturdays at 2030 NZT

**NZART Branch 80 Hibiscus Coast** - 3692 kHz, Mondays at 2000 NZT

**NZART Branch 83 Raglan** - 3608 kHz, Saturdays at 0830 NZT. *Sunday sessions at 1900 NZT appear to be no longer operating (30/6/24)*

**NZART Branch 89 Radio Electronics Group** - 3615 kHz, Thursdays at 2000 NZT



**Competition consol**  
for the Icom IC 7300  
available from  
[www.thehamshack.co.nz](http://www.thehamshack.co.nz)

## Canterbury Branch 68 Wednesday 2000hrs 3.730MHz Wednesday Grant ZL2G

**Geek Net** - 3655 kHz Wednesdays at 2000 NZT. [Contact ZL1GKB](#) for information.

**Homebrew Net** - 7105 kHz (summer) or 3760 kHz (winter), daily at 1730 NZT

**New Zealand Amateurs Club Net** - 3700 kHz, Sundays at 1930 NZT. *Appears to be no longer operating (30/6/24)*

**Old Timers' Club (OTC)** - 3870 kHz, Mondays at 2030 NZT

**Ten Ten International (Down Under Chapter)** - 28530 kHz, Saturdays at 1030 NZT (all year)

**ANZA Net** - 14183 kHz, daily at 0500Z. For DXers.

## HF AM Nets

**OTC (Old Timers' Club)** - 3850 kHz, Sundays at 1030 NZT

**SPAM (Society for the Preservation of Amplitude Modulation)**

Sunday: 7125 kHz at 1600 NZT

Monday: 3850 kHz at 1130 NZT

Wednesday: 3850 kHz at 1130 NZT

Friday: 3850 kHz at 2000 NZST or 2030 NZDT

**Canterbury 2M SSB Net** 144.200MHz every Tuesday from 2000hrs (vertical polarisation)

**Canterbury 6M Net** 3850 6M Repeater Thursdays from 2000hrs (vertical polarisation)

**Canterbury Area Net** 5625 Repeater, 2000hrs on Sundays

**Canterbury Branch 68** Wednesday 2000hrs 3.730MHz Wednesday Grant ZL2GD

**National Broadcast** last Sunday of the month at 2000hrs on 3.900MHz, National System, 6975 and 705 Repeaters

**Preparedness Net (South Island)** - 3705MHz Monday nights 20:45 hrs Greg ZL1GUD

[www.thehamshack.co.nz](http://www.thehamshack.co.nz)



## CHRIS HATTAN

### THE MAN BEHIND THE HF NET LIST

My name is Chris Hattan ZL1CJH. Been a ham since Novemeber 2022 after doing a br 89 Hamcram.

Not long after I became Secretary for Br 89 Radio Electronics Group which I have not stepped away from as am now a Deputy Group Leader for Waikato AREC. My designated area is Training.

I have Organised and co-ordinated 2 Hamcrams over the past couple of years for our branch as well.

I live in Hamilton and am a Retired Registered Nurse (September 24). I worked mostly in mental health during my working career.

Came from a Shortwave Listener and CB background in my younger days.

Other Hobbies include Photography, geocaching and Motorcycle riding.

I volunteer for Community Patrols New Zealand, West hamilton. [Home - Community Patrols of New Zealand](#) where we patrol our area and are the eyes and ears for the Police. roughly 2 nights a month.

Home station consists of an Icom 7100 with a Fan dipole for HF. Icom ID 52A HH for local analogue FM and Dstar, Open spot 4 and a SharkRF M1KE and all digital mode Tranceiver. I can be found on most of the usual digital modes, DMR, DStar, C4FM

#### HF Calendar

Last year I was looking at what sort of nets there were around on HF.

I noted that there were various lists about, in various states of age and not updated.

I used the NZART website to check up on some of them. Where I couldn't find info I contacted branches to see what was happening.

Then I thought why not put all this information into a Google Calendar. As my memory isnt the best and I had a personal one to remind me of appointments and the like.

So, I cross-checked the lists I had and input the data into a Google Calendar titled 'HF Nets'.

I advertised this on various Facebook groups and so far have over 60 subscribers.

I note Christchurch Amateur Radio Club actually have the link to this calendar at the bottom of there Webpage.

<https://calendar.google.com/calendar/embed?src=myz11cjh%40gmail.com&ctz=Pacific%2FAuckland>

Now I try to check in on the nets to check out if they are still running and keep the list updated.

Thanks for Warren ZL2AJ who had already started to compile a list which is what I started with.

It's a busy calendar and the beauty of it is that you can turn the calendar and on and off in your calendar.

I hope folk find it useful. A lot of my ham friends now as me " what nets on tonight"

73's everyone

Chris Hattan ZL1CJH/ZL2CJ

myz11cjh@gmail.com





# spiderbeam

high performance lightweight antennas

NEW ZEALAND AGENTS  
WWW.THEHAMSHACK.CO.NZ

## 12M HEAVY DUTY TELESCOPIC POLES

high strength professional telescopic fiberglass pole	
fully extracted length (height)	12m (40ft)
transport length	1.18m (3ft 10")
weight	3.3kg (7lbs)
bottom diameter	55mm (2 1/6")
top diameter	8mm (1/3")
wall thickness	1.4mm - 2mm (1/18" - 1/12")
number of segments	12
pole material	black fiberglass, UV protected specially reinforced multilayer winding



Spiderbeam Heavy Duty fiberglass poles are perfect for building all kinds of wire antennas. A single person can easily put them up within a few minutes. Especially developed to make our portable equipment even more rugged and durable!

These are extremely strong poles, with a much greater wall thickness (up to 2mm!) than the usual "fishing rod" types. A special reinforcing winding technique - several layers of fiberglass are wound in alternating direction (criss/cross winding) - provides greatly increased lateral and linear strength. Stronger joints are achieved by a much larger overlap between the individual tube segments than usual.

Spiderbeam 12m Heavy Duty poles are very well suited for building 40/80/160m wire GP or inverted L antennas. (Lee W9OY has built a beautiful 80/40m vertical using our poles) They can also easily support temporary lightweight 1 Element Quad or Delta loops for 20-10m, and dipoles for all bands, especially when used with open wire feedline. (Most baluns would be somewhat heavy). 4-6 poles could be used to build lightweight beams for 40 or 80m.

Even the top segment is 8mm in diameter (and 1.4mm wall thickness), so the poles can be used to their full 12m length - unlike other poles where the top segment is very thin as a whip. During our tests we were able to put 80m inv vee dipoles (made from 1mm diameter enameled copper wire (AWG 18) and open wire feedline) right at the top of the 12m pole.. No way you can do this with a regular "fishing rod"! At 9-10m height, the poles can easily support small VHF / UHF yagis.

The best (and cheapest) wire to use for building such wire antennas (verticals, loops, dipoles etc.) is AWG 18 (= 1mm diameter) enameled copper wire or similar. Thin fishing monofilament (1mm diameter) or similar rope is very suitable for guy lines.

The first prototypes were tested Nov/Dec 2004 during 120km/h winds at the North Sea coast and performed just great! Since then, well over 3000 poles have been installed worldwide. Get yours today and enjoy outdoor radio with a professional heavy duty pole.

[www.thehamshack.co.nz](http://www.thehamshack.co.nz)



## NEW YAESU FTM 310

One of the standout features is the C4FM Digital Mode, which provides clear, high-quality voice transmission and error correction to maintain intelligibility even in weak-signal conditions. Additionally, the radio supports Automatic Mode Select (AMS), allowing it to automatically detect whether an incoming signal is analog FM or C4FM digital, switching without operator intervention.

The Group Monitor (GM) function lets you see other C4FM stations in range, displaying distance and direction when paired with GPS. The built-in GPS receiver not only supports GM but also enables location data transmission, APRS operation, and logging for mapping.

Its Wideband Receiver function allows monitoring outside the amateur bands, giving access to public service channels, aviation, and more, depending on regional regulations. The radio includes Dual Receive capability, letting you monitor two frequencies at once, either both analog, both digital, or mixed.

The Large Full-Color TFT Display is customizable, showing frequency, signal strength, operating mode, GPS coordinates, and more. You can change the color schemes for better visibility under different lighting conditions.

The Memory System allows storage of hundreds of channels with alphanumeric labels, making it easy to recall frequently used frequencies. You also get DTMF, tone squelch, and digital squelch options for selective calling and quiet monitoring.

With WIRELESS-X Compatibility, the FTM-310D connects directly to Yaesu's internet-linked node system, enabling worldwide communication through digital repeaters and nodes.

The Yaesu FTM-310D covers the following ranges:

- Transmit: 144–148 MHz (VHF), 430–450 MHz (UHF) – may vary by region
- Receive: 108–999 MHz (with gaps per regulations)
- This wide coverage makes it useful for amateur bands as well as general scanning.

The radio provides three selectable output levels for both bands:

- High: 50 watts
- Mid: 25 watts
- Low: 5 watts
- This flexibility allows you to conserve power when operating locally or use full output for long-distance contacts.



[www.thehamshack.co.nz](http://www.thehamshack.co.nz)

## THE OZ POTA SCENE

JOHN VK6ASK



Today I had chosen two parks fourteen kilometres out of Balingup in the southwest of WA. It took me a little time to work out the boundary of the two and find a place to set up. I parked just off a sealed road in a small clearing as the track I wanted to travel was closed to the public. I prefer to get deeper into the bush, so that I am not so obvious to the passing traffic, but it was not to be, so I set up my 12 metre long, end fed long wire (from Horizon Antennas) between two trees close to the road and hooked it into my Icom IC7100 and called Shane (VK6AAX) who is always my test pilot. If Shane gives me the thumbs up on 40m, then I am good to go. This little long wire has been my go-to for POTA, as it takes no room to pack, is multi band and is tough as nails.

For POTA I also have and use a Xiegu G90 in a go-box, a 4G wifi extender, various lithium batteries, a mag loop antenna, various mobile antennas and my Iphone apps including Ham2K, ParksNPeaks and Facebook.

I must find a better way to get my long wire into the trees, throwing rocks tied to cord can be quite comical and frustrating as I am always trying to get that branch that is just a little higher than I can throw. Once up, all I need to do is a quick tune and then I am ready to start calling CQ. Now the time comes to tell the world where I am, and most times out in the bush I need to rely on my 4G wifi extender to connect to the apps. This stops me cursing at my phone when the signal is too hard to use. I just use a cheap 4G mag base antenna and hook it to the extender. If there is any sniff of a signal around, it will pick it up and give me access.

I start calling CQ and call and call and call. There is nothing worse than silence when you have no numbers in the log is there?

Is there something wrong with my gear, I nervously check everything, then try again. Yes, a contact, then another, then another. The numbers start to rise.

After a while, a ute pulls up and a local from the area asks me "what ya doin out here mate, you alright" and we spoke for twenty minutes about radios and the world in general, mostly about the Fremantle Dockers though, and how they need to win their next game. Eventually he moved on and I went back to calling CQ. I ended with nineteen in the bag in the short time I had to do the activation.

Sitting out in the bush is magic.

I have only completed 15 activations so far, and hunted many hundreds of conversations, so I am new and still excited about this part of amateur radio.

I really must thank David (VK6DS) and Phil (VK6DEV) for getting me into this great outdoor activity. The more you participate the more you learn, the more people you meet. I've met and worked Gerard, Alan, Marty, Peter, Stephen, Scott, Laurent, Brett, Lee, Jeff, Jimmy, Mack, David, Lance, Craig and dozens of others many times over, and what I've found is everyone is so keen to help you achieve your numbers. The band conditions here in the southwest of Western Australia are pretty ordinary at the moment and contacts of 15 and 10m are sporadic and mostly weak, especially when you want them to be better. 40m is my mainstay and there are a great bunch of operators in the south of the state that continue to make this part of the hobby great. As you may have guessed, I am only a Foundation operator, so limited in bands, but that just makes me more enthusiastic. I am self-employed and travel the southwest regularly, so will often be calling CQ POTA from many locations between Bunbury and Bridgetown.

From September to December, I will be travelling the country and working POTA from as many parks as I can, so listen out for me. I have a Mercedes Sprinter van fitted out with a Codan NGT and a 9350 auto tuner. I am also a new member of the Austravel network, so I can't wait to get on the road and have some great adventures.

John  
VK6ASK





## NEW ICOM IC 7300 MKII

The first IC-7300 gained immediate popularity because it gave operators access to spectrum scope capabilities and SDR technology at a price point previously unseen. However, the MKII improves on nearly every aspect of the original design.

The new version includes expanded memory storage, a more responsive waterfall display, and refined DSP algorithms that produce cleaner audio and sharper filtering. Moreover, it improves dynamic range, which helps during crowded contest conditions or when operating in areas with strong local signals. The result is a more polished and capable transceiver that addresses the demands of modern amateur radio.

The IC-7300MKII covers a full range of HF bands along with 6 meters, making it a versatile all-around rig. Frequency coverage includes:

- Receive: 0.030–74.800 MHz
- Transmit: 1.8–54.0 MHz (amateur bands only)

Output power remains consistent at a solid 100 watts on HF and 6 meters, while AM operation provides 25 watts carrier output. Because of its robust final amplifier design, the MKII can maintain stable output over long operating sessions, whether you are working voice, CW, or digital modes.

### Spectrum Scope and Waterfall Display

One of the standout features of the IC-7300MKII is its improved 4.3-inch color touchscreen display. The original IC-7300 introduced many operators to real-time panadapter capability, but the MKII refines this with faster refresh rates and higher clarity.

As a result, signals appear more distinct, and band activity is easier to track. Additionally, the waterfall shows even the weakest signals, which helps operators identify DX opportunities or monitor noise levels across the band.

### Direct Sampling SDR Technology

At the heart of the radio lies direct RF sampling. Unlike traditional superheterodyne receivers, the IC-7300MKII converts RF directly into digital data, which provides cleaner demodulation and more accurate filtering. The updated MKII design uses a higher precision ADC and improved FPGA processing, which enhances weak-signal performance and reduces overload from strong signals. Because of these refinements, the radio handles crowded band conditions more effectively and delivers superior audio clarity.



[www.thehamshack.co.nz](http://www.thehamshack.co.nz)



CONTINUED:

#### Advanced DSP and Filtering

The MKII brings major improvements in filtering and signal handling. The digital signal processing features include:

- Variable passband filters for precise audio shaping
- Digital noise reduction with improved algorithms for cleaner audio
- Automatic notch filter to eliminate carriers or tones
- Noise blanker to suppress ignition or line noise

Since these tools work in the digital domain, they respond faster and offer greater flexibility than traditional analog filters. Furthermore, operators can customize their filtering for CW, voice, or digital work, which provides maximum control in any situation.

#### Audio and Speech Processing

Audio quality often defines a station, and the IC-7300MKII delivers on both transmit and receive. The built-in speech processor ensures punchy and articulate audio, even under contest conditions.

Additionally, the MKII refines receive audio by adding better speaker response and improved DSP-driven noise suppression. Operators will notice less fatigue during long operating sessions, and contacts will hear a stronger, more consistent signal on the air.

#### Digital Mode Integration

Digital operation continues to grow, and the IC-7300MKII handles it with ease. A built-in USB interface allows operators to connect directly to a computer for FT8, PSK31, RTTY, and other digital modes.

Because no external sound card interface is needed, setup becomes simple and reliable. The MKII also supports CI-V control, enabling logging programs, remote operation, and software integration with minimal effort.

#### Memory and Band Stacking Registers

The IC-7300MKII expands on the memory system of the original. With additional memory channels, users can store favorite operating frequencies, nets, and repeaters. Band stacking registers let operators save and quickly recall three different operating frequencies per band.

As a result, switching between CW, voice, and digital spots on the same band becomes fast and efficient.

#### Build Quality and Reliability

Icom designed the MKII to handle continuous use in demanding environments. The solid chassis includes an effective heat dissipation system, which ensures consistent operation even during long key-down digital sessions or high-duty contesting.

Its compact form factor allows operators to use it as a main shack rig or take it into the field for portable operations. Therefore, the radio adapts easily to different styles of amateur radio.

#### Full Specifications of the Icom IC-7300MKII

- Frequency coverage (receive): 0.030–74.800 MHz
- Frequency coverage (transmit): 1.8–54.0 MHz (amateur bands only)
- Output power: 100 watts HF/6m (25 watts AM carrier)
- Modes: SSB, CW, RTTY, AM, FM, digital modes via USB
- Display: 4.3-inch color touchscreen with real-time spectrum scope and waterfall
- Architecture: Direct sampling SDR with advanced FPGA
- Filters: Variable passband, auto notch, noise blanker, noise reduction
- Audio: Built-in speech processor, improved DSP audio shaping
- Connectivity: USB for CAT and digital modes, CI-V remote control
- Memory: Expanded channel storage and enhanced band stacking registers
- Dimensions: Compact desktop size with integrated cooling system

#### Why the Icom IC-7300MKII Is Better

The Icom IC-7300MKII improves upon the original in several critical areas.

First, it offers sharper and faster display performance, which makes the panadapter more useful during contests and DXing.

Second, it enhances DSP performance, providing cleaner audio and better filtering. Third, it delivers improved dynamic range, which allows the radio to perform more effectively in high-signal-density environments.

Finally, it adds more memory and refined software tools, making it easier to operate across multiple bands and modes. Because of these upgrades, the MKII stands as a worthy successor to the legendary IC-7300.

www.thehamshack.co.nz

**NEW**



## ICOM ID-5200

ICOM Announces New ID-5200

The headline product is the **ID-5200 144/430 MHz Dual-Band Transceiver**, previewed as an early concept. Please note that specifications may be subject to change.

ID-5200 144/430 MHz Dual-Band Transceiver

The ID-5200 is a versatile dual-band transceiver supporting both FM and DV (Digital Voice) modes, with the ability to perform simultaneous dual reception of FM-FM, FM-DV and DV-DV signals.

- Touchscreen Operation – Intuitive touchscreen interface for quick access to functions and settings.
- Broad Reception – Receive VHF, UHF and Airband signals for extended listening options.
- Wi-Fi & Bluetooth – Built-in connectivity for seamless integration with other devices.
- Internal Gateway Function – Connect to Wi-Fi and operate in terminal mode or access point mode for flexible networking.

DV Repeater Monitoring – Dedicated repeater monitoring function keeps you connected.



## AH-6 Concept Model ATU

Icom also previewed the AH-6, with details yet to be confirmed.

This is an automatic antenna tuner that supports both 50Ω antennas (SO-239) and long wire antennas with a single unit, covering frequencies from 1.8MHz to 50MHz. The input power rating is 100W.

[www.thehamshack.co.nz](http://www.thehamshack.co.nz)



# ALINCO



## NOW IN STOCK

### WE ARE THE OFFICIAL AGENTS FOR NEW ZEALAND

Alinco was established 55 years ago and manufacture a range of VHF and UHF radios as well as Power Supplies.

Radios include DMR as well as VHF, UHF and Dual Band



IP67  
DUAL BAND +  
RECEIVE VHF AM AIR BAND  
& FM BROADCAST



60 WATTS HIGH POWER



15 HOUR BATTERY TIME  
WIDE/NARROW FM TX/RX -PROFESSIONAL-GRADE VOICE COMPANDOR  
RECEIVE VHF AM AIRCRAFT BAND AND FM BROADCAST



8 WATTS HIGH POWER



DMR



70 WATTS HIGH POWER



DMR



[www.thehamshack.co.nz](http://www.thehamshack.co.nz)



## KENWOOD TM-D750

Kenwood's new TM-D750A 144 / 220 / 430 MHz DIGITAL TRIBANDER features Bluetooth, GPS, and APRS TNC capabilities, promising enhanced connectivity and take your operating experience to the next level.

### Key Features:

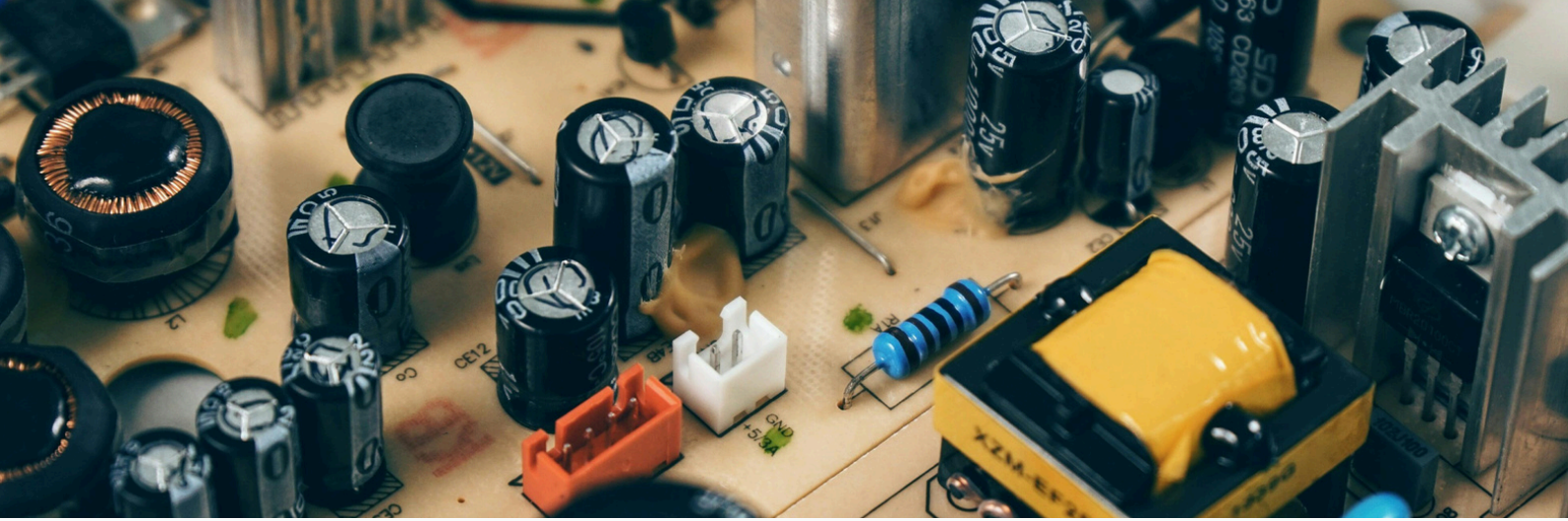
- **APRS Protocol compliant:** Real-time 2-way data communications for full-scale operations, featuring a wealth of displays and functions
- **D-STAR Digital Protocol Compatible:** Flexible D-Star network access, including Bluetooth, USB, and Wireless LAN.
- **Built-in Wireless LAN:** D-Star network can be accessed directly and easily using the Direct Mode without the need of external devices.
- **Reflector Terminal Mode:** The built-in MMDVM command enables easy access to D-STAR reflectors via a Windows PC or Android device using a USB connection or Bluetooth.
- **Simultaneous Reception:** Dual signal reception for digital voice and data expands your communications capabilities.
- **Built-in KISS TNC:** supports APRS operations with a standalone digipeater function. PC connection enables 1200/9600 bps packet communications and IGate station operation.
- **Flexibility:** Remote Operation Panel with built-in speaker
- **Convenience:** Built-in GPS module and patch antenna
- **Display:** 3.45inch TFT color LCD with high brightness and wide viewing angles
- **Connectivity:** USB-C port and microSD card slot are on both the remote head and RF Deck respectively.
- **Voice Guidance:** Powerful voice guidance features include 4-step variable speed and over 900 phrases.
- **Audio Quality:** The built-in speaker delivers renowned KENWOOD sound quality.



## KENWOOD TH-D75

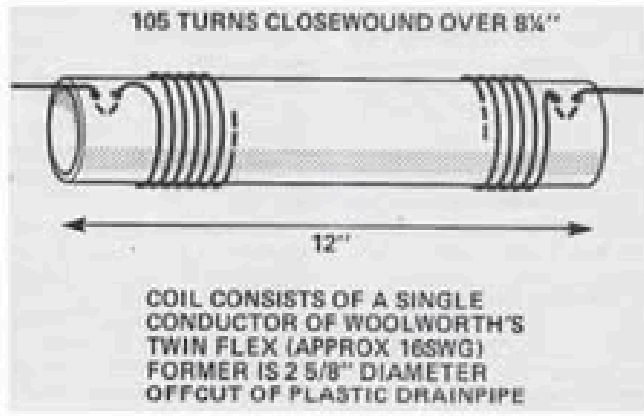
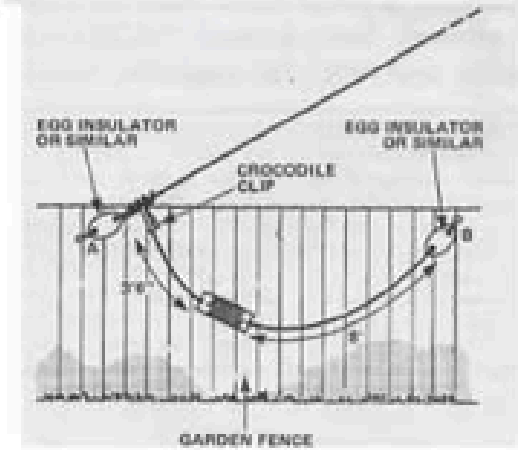
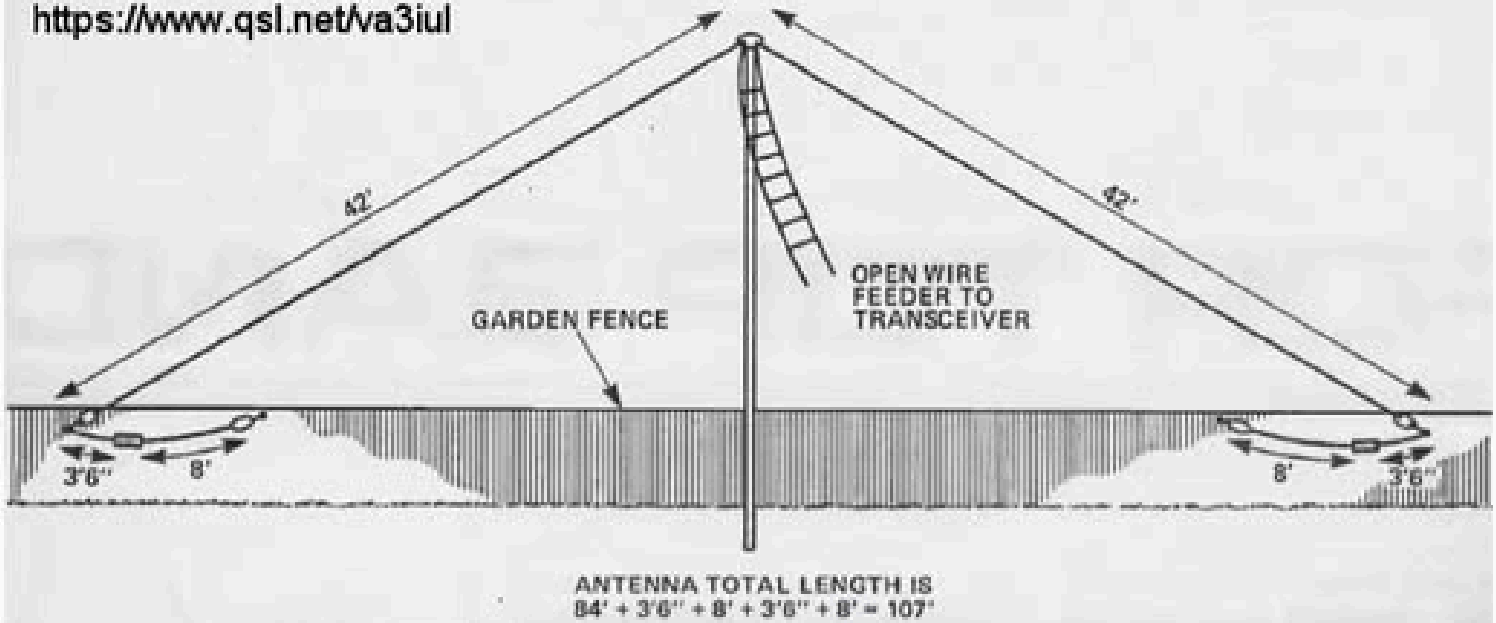
- Compatible with the APRS communication protocol, which allows real-time two-way data transmission by using packet communications. Various types of communication are possible, such as GPS positional information sharing, text messaging, and communicating via the ISS and other satellites. In addition, full-fledged APRS operation is made possible through a unique standalone digipeater function that sets APRS-veteran KENWOOD apart.
- Station list, object functions
- QSY function
- Text messaging
- Standalone digipeater function
- KISS mode TNC
- APRS Menu Settings
- Wideband and multimode reception
- Supports D-STAR, the amateur radio digital communications protocol, which provides both voice and data modes. From local to overseas QSOs can be enjoyed in a variety of modes, including simplex, single repeater, and gateway communications over a network of repeaters. Newly supported Reflector Terminal mode and simultaneous reception of two digital voice signals provide additional flexibility to D-STAR operations.
- DV fast data mode
- Simple operation in DR (D-STAR Repeater) mode
- Setting via the digital function menu
- Reflector Terminal mode
- Simultaneous reception of two digital voice channels
- Easily updated repeater list
- Built-in GPS module and patch antenna
- Standard compatibility on a rich interface
- Powerful voice guidance
- More convenience with free PC software
- IF output mode
- KENWOOD custom-tuned sound quality

[www.thehamshack.co.nz](http://www.thehamshack.co.nz)



## ANTENNA HOME BREW

<https://www.qsl.net/va3iul>



Why do I always include an antenna project or two? Well, with limited technical knowledge and with limited money you can build an antenna and have the achievement of working DX on an antenna you have built.

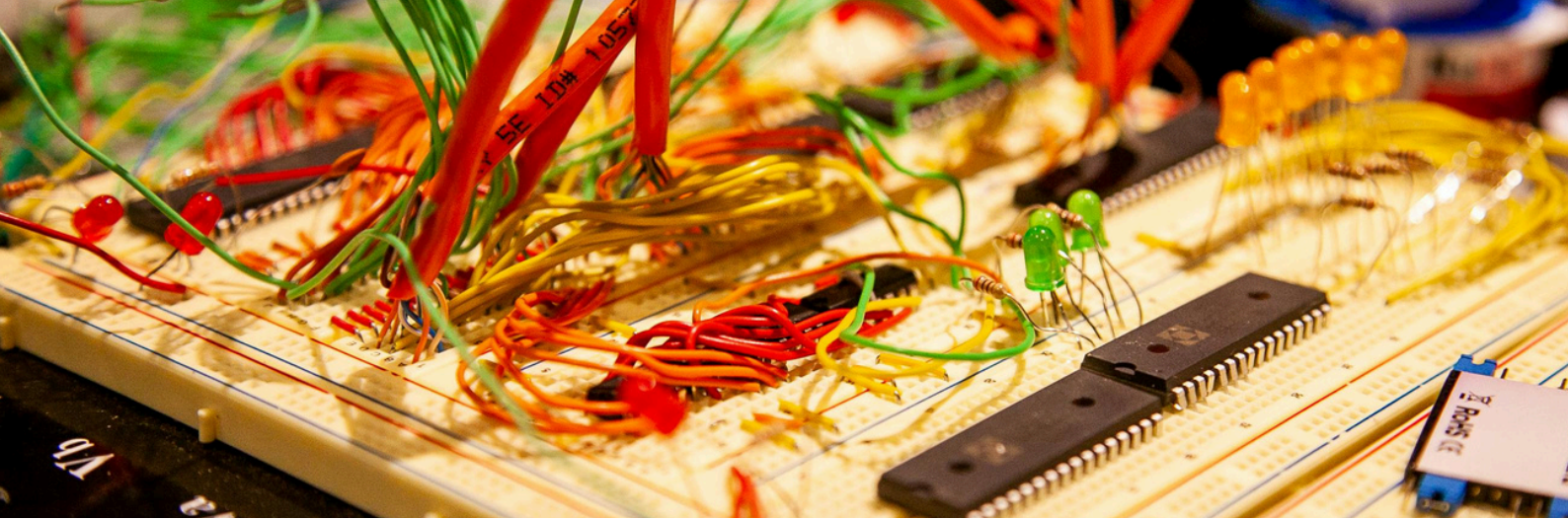
The cheapest way to start is to use speaker wire and a some off-cut PVC pipe.

I have just built the "small garden" multiband antenna and with a 4:1 balun I had it tuning on all bands from 80m to 6m, obviously some are more efficient than others, BUT as Peter from Waters and Stanton says "It is not all about DX but more about talking around the neighbour hood or region. DX is great but that shouldn't be your only goal.

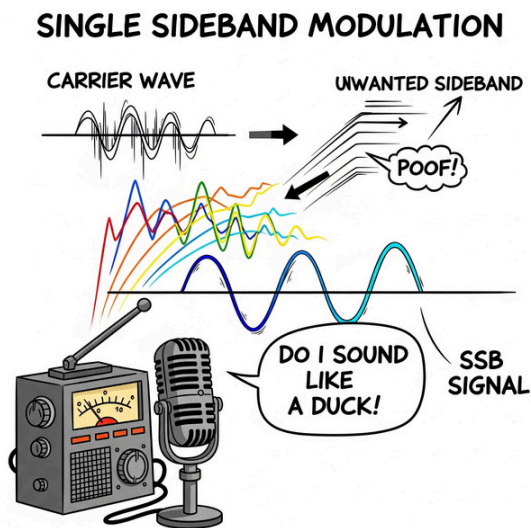
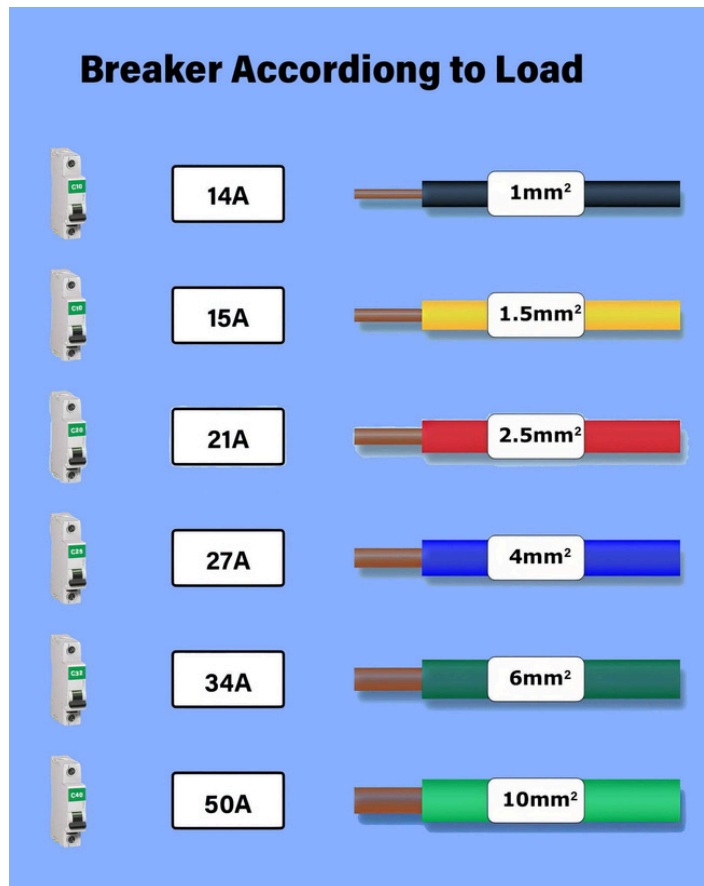
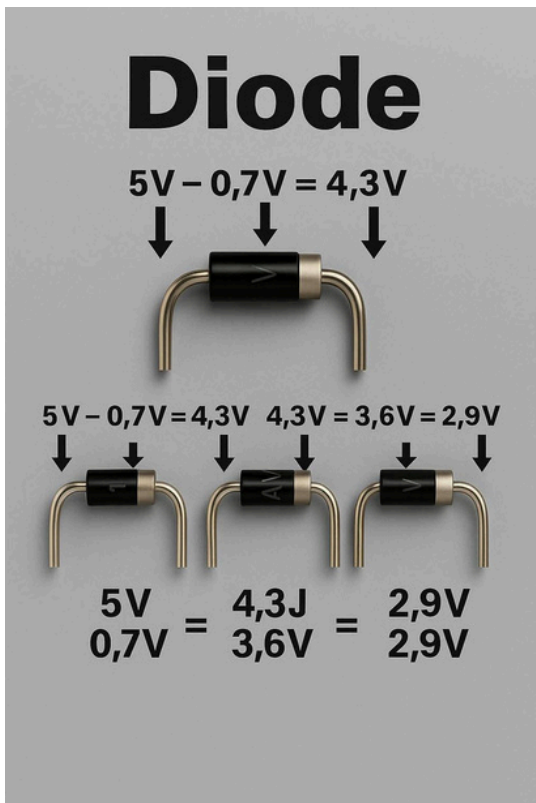
Build some of these and see how it works.

You are welcome to email me [ZL1GUD@proton.me](mailto:ZL1GUD@proton.me) and I will assist where I can.

[www.thehamshack.co.nz](http://www.thehamshack.co.nz)



## TECHNICAL TAKE AWAYS





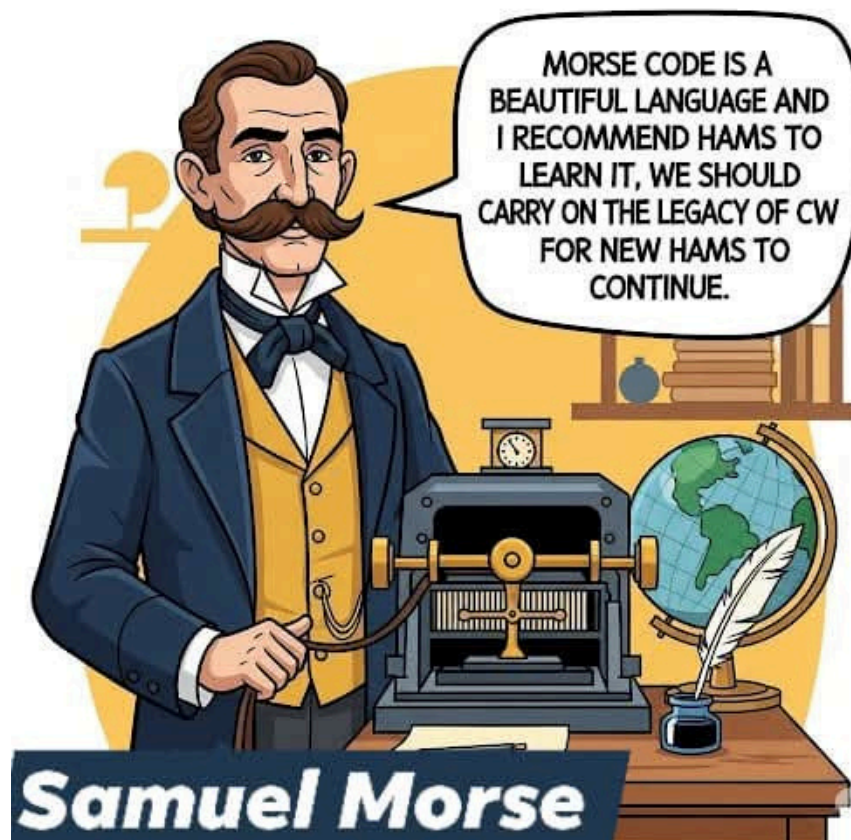
MORSE CODE FISTS DOWN UNDER

**Morse code practice**

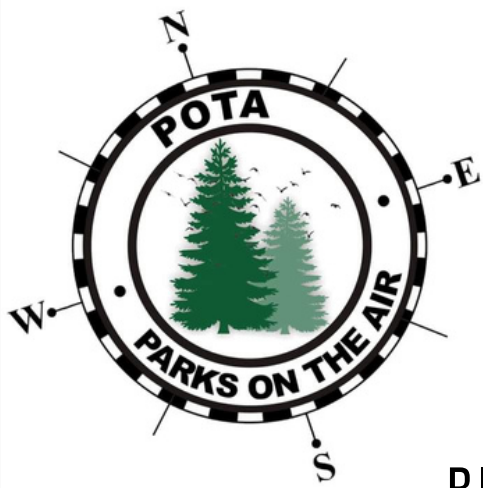
<https://morse.mdp.im/news/>

**News Headlines in Morse Code at 20 WPM**

<https://www.listennotes.com/podcasts/news-headlines-in-morse-code-at-20-wpm-mark-JIUqd6RwXsa/>



[www.thehamshack.co.nz](http://www.thehamshack.co.nz)



# POTA OPERATORS MATT ZL4NVW

## BITING OFF MORE THAN I CAN CHEW

Well, July is upon us again and with it the end of the govt.nz contract year. So time for another month off playing SOTA whilst we wait to see who gets awarded the next year of work. Is it really 12 months since I last wrote that?

Parental house-moving (and the associated list of chores for offspring) mandates a trip to Nelson, so another nose around the Richmond Ranges seems appropriate. The recent 'ex-tropical-storm' that devastated the region has wiped all signs of snow off the ranges, and left them clean and crisp for some winter tops tramping

(yes - damaging tropical storms, especially reaching 40+ degrees south should not happen mid-winter. Changing times ...)

The ridgeline delineating the Pelorus River catchment contains 23 SOTA summits - of which I've previously only activated six. These range from 1000m to 1700m, with the bushline this far north sitting around 1300m - making for an interesting mix of open tops, scrub and forested ridgelines. Seven huts, bivvies and shelters are unevenly scattered along the route, providing good winter shelter on all but the northern-most section. Even more appealing, only about 30% of the ridgeline is tracked, making this a good, challenging winter tramp.

The plan is to drop the caravan at the southern Wakamarina Valley (Butcher's Flat) roadend, drive the truck to the Mt Duppa roadend and then cycle the 50km back to the caravan for the night before starting.



## Day 0

Things do not go to plan.

A stone through the window from a passing stock-truck on the drive up adds delays and it's late afternoon, rather than late morning, when I arrive at the Pelorus Tavern, Canvastown, roughly in the centre of the planned loop.

A quick recce shows that fords up the Wakamarina Road have been scoured out by the recent storm and are not caravan friendly.

So, carefully laid plans get discarded in favour of last-minute improvisation. I leave the caravan in the Pelorus Tavern's rear carpark; drop the truck at the start of the 4WD Maungatapu Road; cycle the 25km back to the tavern in the last of the day's light. I've added a 14km road walk the next morning up the Wakamarina, and the truck is now a day short of the planned end-point. But at least there's a good pub feed to be had, and we can get out of the truck and start walking something in the morning!

## Day 1

A 7am start from the tavern sees us heading up the Wakamarina Valley road, torch in hand. The valley is littered with old mining remains - this was a major gold-mining area - but we press on rather than linger and investigate, reaching the Butchers Flat roadend at a respectable 9:30am. An easy walk follows for a further 7km through forest, still recovering from century-old logging / mining days, along old benched miners' pack-tracks above the upper Wakamarina River. Devils Creek Hut, at the last major forks, provides a pleasant shelter for lunch as the sun labours to melt the morning frost off the grassy clearing outside. Bagging Devils Creek leaves me just 2 huts left in the Richmond Ranges to visit - another key driver for the trip!



Devils Creek Hut - [ZLH/MB-013](#)



[ZL3/HMB-144](#)

We've gained just 200m in the 22km route-march from the sea-level Pelorus Tavern, but now the ascent starts in earnest and the pace drops off. The first 1066m summit of the trip lies just 2.5km from the hut. The pack contains 7 days provisions for both of us, plus 3 days emergency supplies, full winter gear including tent, ice-axe and crampons, and the usual SOTA bumph. Thankfully we have a track to follow for the ascent, and the beech forest is open and good going. We reach our first summit - the unnamed HEMA hump [ZL3/HMB-144](#) - at 1:45pm with 25km and 1060 vertical meters under our belts (collars). Not too bad going.

The mossy beech forest of the summit is open and makes antenna deployment simple - though there are only so many photos you can take of masts in trees. The 40m band is working well within ZL, though 20m fails to bring in anything further afield. Still, 15 contacts in the log for a ZL HEMA summit is good going and a great start to the trip.

From the summit, the track to Fosters Clearing needlessly discards 300m to sidle the face directly to the hut. I contemplate looping instead along the untracked ridgeline - but there will be time enough for off-track walking later, and so grudgingly make the descent, sidle and re-ascent to the hut at 1130m on the main bush-clad ridgeline.

The second HEMA summit of the day, [ZL3/HMB-128](#) is named after Fosters Hut [[ZLH/MB-016](#)], but in actuality the hut lies 5m below the AZ for the 1160m peak. Thankfully the huts-on-the-air rules allow activations from within 100m of the hut, and we are able to find a spot within the AZ for both and combine the activation - but a more generous deity would have arranged the landscape such that we could have activated the summit from the comforts of the hut. The evening grey-line brings in a good number of local contacts on 40m and mix of VKs and scattered DX on 20m, including the indefatigable F5PVI and KG5CIK and the Ukrainian call UY7VV.



Fosters (Clearing) Hut - [\[ZLH/MB-016\]](#)

Fosters Clearing provides stunning views down to the sounds and east to the Kaikoura Ranges, with ZL3/MB-001 prominent on the skyline. There's a good stock of dry firewood in the hut, and abundant options to replenish it on the surrounding forest floor - so soon the pot-belly is roaring, the billy boiling and we settle in for a warm pleasant night.

Distance: 29km  
Elevation gain: 1360m  
HEMA: 2 summits, 37 QSOs  
SOTA: nil  
ZLOTA: Fosters Clearing Hut, 21 QSOs  
DX: F5PVI, KG5CIK, UY7VV  
Timings: 7am - 4:30pm

## Day 2

A warm breeze keeps off the overnight frost and we awake to clear blue skies more reminiscent of 5am on a summer morning than 8am mid-winter. Cloud fills the sounds below us, but up here on the roof of the world, all is perfect.



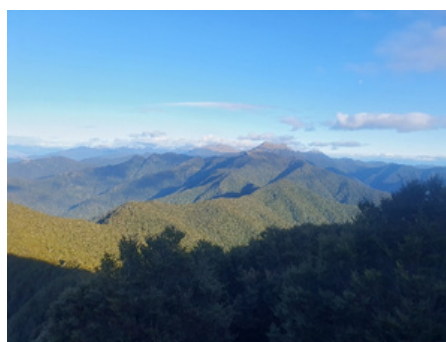
Marlborough Sounds from Mt Baldy

Whilst several tracks cross the main ridgeline south of the Pelorus valley, none follow it and so we leave behind the luxury of easy kilometers of turn-off-the-brain and follow-the-markers travel and start the off-track tramp for real.

That said, Mt Baldy is well-visited, and a well travelled ground-trail leads west through the mature forest of the ridgeline from Fosters Clearing to emerge onto open tops on the first SOTA summit of the day - the aptly named Mt Baldy [ZL3/MB-156]. Conditions on 40m are excellent, with 59 reports from the length of ZL. The hour still being early for or VK neighbours I opt to move on rather than pause and try higher bands.



Mt Baldy - ZL3/MB-156



Ridgeline to Mt Fishtail from Baldy

From Baldy the ridgeline drops back into the bush, meandering over a series of low peaks of which only Mt Royal breaks the bushline, before a final evening's climb to the 1700m Mt Fishtail - the 1st 6-pointer of the trip. The dry porous geology means that water is unavailable on the tops, and our only options for the day are to reach Mt Fishtail Hut, or make a long unnecessary descent into the tight valley-heads below to camp. The well travelled foot-pad is gone, but ephemeral game trails and mostly- open forest provide reasonable travel.

The bushclad HEMA summit ZL3/HMB-140 is the second summit of the day, and I make my usual daytime two-band activation on 40m and 20m for a mix of ZLs and VKs. It is only when I break onto the tops for the third peak, Mt Royal, that I begin to realise that the usual approach is just not going to work. It's 12:45pm, I'm barely half-way through the distance, have all the most challenging ridgeline sections ahead of me, 3 more summits to activate and only 4.5 hours of daylight remaining.

The give-everyone-a-chance activation strategy: 'get the best possible antenna deployment, work at least two bands, work each until I'm sure no chasers remain' gets chucked over the bluff. The newly minted 'SOTA Sprint' policy of 'chuck the antenna up the fastest way available, work a single band for 10 mins max, snack as I activate, tear down, depart' is enacted and remains in-place for all but the last day of the trip.

*The handle this end is George. We've had a low of -3 overnight, but heading for a top of 5 degrees. My operating conditions are ..., interested to know what you're running that end ...'. Aaargh!*



Mt Royal - ZL3/MB-148

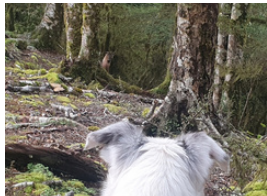
The lack of water along the ridgeline and the unaccustomed heat of the winters day are taking their toll on me by the end. The descents off Mt Royal and the 4th summit of the day [ZL3/MB-368] are bluffed, circuitous and challenging. Energy flags as each ascent takes its toll. It takes a full hour to travel the final 1km of the 500m ascent to Mt Fishtail [ZL3/MB-098]; with stops dropping to every 50 breaths by the time I crest the summit. I've not felt this unfit in at least a decade. But we make the summit for an apocalyptic sundown, completing the fifth slurred, clumsy activation of the day with unresponsive jaw and numb fingers in the fiery evening light.



#### Mt Fishtail - ZL3/MB-098

Mt Fishtail Hut is a simple alpine bivvy, well above the bushline - so no prospect of a warming fire. The hut lies just 400m from the summit but at the base of impassable bluffs on it's southern flank. Thankfully visibility holds for the circuitous 1.5km descent through scree faces to its west and back to the hut on treacherous frost-coated rocks. 5:45pm: the ice-axe is required to break through the coating of ice on the water-tank, and rather than erecting antenna and deploying radio to activate the hut, I get the billy boiling on my gas stove, crawl into my sleeping bag and drink a warming soup as I contemplate the prospect of emerging from my cocoon to cook dinner.

Distance: 20km  
Elevation gain: 1800m  
HEMA: 1 summit, 15 QSOs  
SOTA: 4 summits, 38 QSOs.  
ZLOTA: nil  
DX: F5PYI, VK3PF  
Timings: 8:00am - 5:45pm



#### Day 3

Reascending Mt Fishtail in the dull, ice-misted, morning light, we cross the its two western highpoints and scramble back down through the various layers of bluffs on the ice-rimed rock-sctee ridgeline, the ice-axe doing good service. From Fishtail to Mt Fell the ridge is tight, convoluted and slow going. Climbing and descending between 1100m an 1350m over [ZL3/HMB-118](#) and ZL3/MB-149 we're above the forest and below the open tops, and thus spend most of the morning pushing through the scrub-layer of intertwined 2-3m-high stunted beech. Only the lowest saddles provide some respite. Thankfully the ever-present goat-trails indicate viable routes, if only I were 2 foot tall!

I've been conscious over the last few weeks of borrowing guy-ropes from my SOTA kit for other purposes and failing to return them - with the result that only one remains - tied to the far end of the EFHW. As a result of which the scrub is at least welcome as the only means to support the mast during activations - unless I remove my bootlaces!

It is gone 1pm by the time we finally break out of the scrub and ascend the scree face to Mt Fell and the luxury of the marked route that makes the Fell-Richmond traverse. The mist has still to clear and the breeze is bitter, and so I make for the simplest possible activation, stringing the antenna horizontally across a small gully between two track markers. There are complains of deep QSB, but it works - with 20 in the log in just over 10 minutes.



#### Activating Mt Fell - ZL3/MB-104

The poled route crossing rock and tussock tops to Mt Richmond is well used and easy following. The HEMA summit Johnston Peak [\[ZL3/HMB-060\]](#) lies just 500m off the track, tempting me to divert to bag 'just one more' easy one. But the bluffed-out ridgeline and the poor visibility mean it takes over an hour to make the return trip. It will be another long late day!

#### Activating Mt Richmond

We manage the final 300m scree scramble to Mt Richmond in one go - a great improvement over the previous day's exhaustion. The drifting ice / mist has accumulated on the 1760m summit - and the bitter southerly still blows. But this is the only peak I have met in ZL with a hollow-ring summit-shelter of piled rocks.

We crouch in the lee of the shelter (the opening is puzzlingly on the wind-prone SW side) and make the final activation of the day, before scampering down the long scree face to the bush-clad shelter of Richmond Saddle and it's eponymous hut.



Distance: 17km  
Elevation gain: 1500m  
HEMA: 2 summits, 19 QSOs  
SOTA: 3 summits, 49 QSOs.  
ZLOTA: Richmond Saddle Hut, 10 QSOs  
DX: VK3PF, VK3ACZ  
Timings: 7:30am - 5:30pm

#### Day 4

I walked the section of ridgeline from Richmond Saddle to Ada Flat 20 years ago, and remember only that it was narrow, bluffed, slow, scrubby, unpleasant and scary. I naively hope that it has improved in the interim.

Things start well with an easy 200m ascent to the northern peak of [ZL3/HMB-089](#) through good open bush. Maybe this will be better than I remember. Sadly the AZ for [ZL3/HMB-089](#) is on the southernmost peak a kilometer away, and with a long, challenging day ahead I don't have time to make the detour to bag it.

#### Ascent to Grass Knob

An easy descent to the broad saddle with the puzzlingly-named rock outcrop of Grass Knob [[ZL3/MB-126](#)] continues well. Then the fun starts - ice-frosted bluffs making the ascent to the first SOTA peak of the day more fun than strictly necessary. Still conditions and morning sunshine on the top make for a great morning activation and good moods, however, prevail.

#### Activating Grass Knob - [ZL3/MB-126](#)

The ridgeline beyond Grass Knob is narrow and bluffed. At 1200m-1400m we're smack in the middle of the thickest of the scrub-layer, with wind-toughened stunted beech doing its best to impeded progress along the narrow exposed ridge. Even the goat trails seem to have mostly vanished.



#### [ZL3/HMB-083](#)

We hit the 'scary bit' I remembered, descending off the 1st HEMA summit - [ZL3/HMB-083](#). A deep bite follows the sharp summit, invisible from the approach and not indicated by map contours. The only solution is to descend 100m off the steep eastern face of the peak following faint goat trails down through scree-chutes above high bluffs to reach narrow, sloping terraces leading to the next saddle. I recall this being absolutely at the limit of my comfort zone on the last visit - but it feels fairly routine today. A bit like the evolving roadside fire-risk warning signs, the time spent in Fiordland in the interim has caused some serious recalibration of the 'scary' scale; with 'Extreme' and 'Catastrophic' being added beyond the original Low, Medium, and High.

#### [ZL3/MB-136](#) (right) from [ZL3/HMB-095](#)

Two further 'bites' beyond the 2nd HEMA peak - [ZL3/HMB-095](#) - are more easily bypassed to the north, before the final SOTA summit [[ZL3/MB-136](#)] on the untracked section of the range is ascended by bypassing it in good open beech forest to the north, and cutting back to the rock/scrub peak from the west.

#### **Part 2 next month**

# 5 Mhz Band Report

I leave my radio on 5.363 MHz when I am in the office and the band has been quiet. I email John ZL1PO and we try and have a QSO once in a while but not much has happened.

## 70 Mhz Band

I see the new Icom mentioned the 70 Mhz band and I wondered why we don't have the band in New Zealand.

The 70 MHz band, also known as the 4-meter band, ranges from 70.0 to 70.5 MHz and is primarily used for amateur radio. It includes various sub-bands for different modes of communication, such as narrowband modes (CW/SSB) and all modes, with specific frequencies designated for beacons and calling.

So what are the chances of us getting 70MHz?

### Frequency Allocations in Europe

#### Frequency Range (MHz) Usage Description Bandwidth Limit

70.000 - 70.090	Propagation Beacons only	1 kHz
70.090 - 70.100	Personal Beacons	1 kHz
70.100 - 70.250	Narrowband Modes (CW/SSB/MGM)	2.7 kHz
70.200	CW/SSB Calling Frequency	
-		
70.250 - 70.294	All Modes	12 kHz
70.260	AM/FM Calling Frequency	
70.294 - 70.500	All Modes (Channelized Operations)	12.5 kHz spacing

### Licensing and Power Limits

In the UK, the 70 MHz band is allocated with secondary status. Full licensees can operate with a maximum power limit of 160W (22 dBW). This is lower than the limits for other amateur bands.

## 222 Mhz Band

The 1.25-meter band, also known as the 220 MHz band, is a portion of the VHF radio spectrum allocated for amateur radio use, specifically from 220 MHz to 225 MHz in the United States and Canada. It is primarily used for local communications and has a history dating back to before World War II, although it is less popular compared to other amateur bands like the 2-meter and 70-centimeter bands.



[www.thehamshack.co.nz](http://www.thehamshack.co.nz)

# WALLABY SURPRISE ON THE AIRWAVES - ZL2HOP?

A ZLOTA Adventure with ZL2BB.

As many radio enthusiasts know, combining outdoor adventures with ham radio is one of life's great joys. Whether it's Parks on the Air (POTA) or the New Zealand spin-off, ZLOTA (ZL Outdoors on the Air), it's all about getting outside, setting up gear in nature, and making contacts across the globe.

One fine day, Grant ZL1GGL and I packed our rig up, batteries, antennas, and lunch (pies and V!), and headed out to activate a few ZLOTA sites in the Bay of Plenty. The sun was out and yet so was the rain but spirits were high, and the bands were just opening up. It was shaping up to be a textbook-perfect day.

Then we found the wallaby. Yes, a real one. And, sadly, a very dead one. It's not every day you expect to find a wallaby while activating a site—let alone one that's clearly had its last hop. But here it was, right beside our operating spot. Being hams, we did what any respectable operator would do: we got a few photos with it. Call it morbid curiosity, call it unusual field documentation, or just good Kiwi humour. Either way, the wallaby became an honorary part of the activation. We joked about issuing it a call sign (perhaps ZL2HOP?), and speculated whether it had been trying to work some DX before meeting its end.

Despite the unexpected guest, the activation's were a success. We logged a good number of contacts, enjoyed the great outdoors, and added another memory to the ever-growing list of radio field adventures.

If there's one thing I've learned from ZLOTA and POTA, it's that no two outings are ever the same. Sometimes you get pileups. Sometimes you get to enjoy a coffee and pie. And sometimes... you get wallabies.

73 and thanks for reading!

Rob – ZL2BB



Wallabies are an introduced pest that are destroying our native forests and farms. There were introduced to New Zealand mainly for sport and the value of their skins. Wallaby species in New Zealand include Bennett's, dama, parma, brush-tailed rock and swamp wallabies.

NZ Dept of Conservation

# PORTABLE SETUPS



Media: The average adult spends \$255 per year on their hobbies.

## Amateur Radio Operators



[www.thehamshack.co.nz](http://www.thehamshack.co.nz)

# ZR1AAH - Africa Correspondent

## NOORDHOEK PEAK ..... SOTA ZS/WC-055



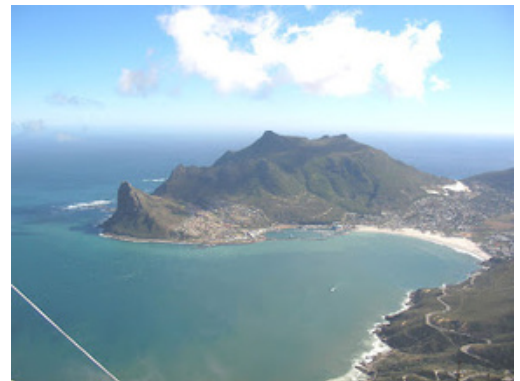
My 20m telescopic vertical on the left, the rock cairn, and Dennis erecting his 20m inverted "V" on the right. The wind is howling and the clouds are swirling around us)



It was a little windy



Dennis snuggled down behind a rock operating his radio. A FT 857D on top of a LDG tuner and a 7a/h gelcel next to it.



The wind has moderated and the cloud cover is starting to lift. Over looking Hout Bay with the "Sentinel" and Karbonkelberg in the background.

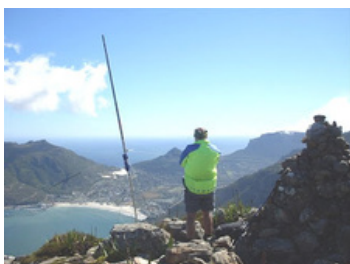


An "Orangebreasted Sunbird" perched on the stone cairn at Noordhoek Peak. This little fella was very tame and looked happy to sit not more than two metres from me ! A number of "Cape Sugarbirds" were seen foraging(?) in the protea thickets but were too active to get any good pics.



The QSL (confirmation of contact) card I use for my Noordhoek Peak activations.

(note the OrangeBreasted Sunbird perched on top of the cairn)



Allen Wood ZR1AAH

# Big Amateur Radio Antennas



6 - 13 June 2025 • CQ Zone 14 • ITU Zone 27 • Loc. IN89VE • IOTA EU-013

## MJ/OP2D

Jersey Island

NBDX Team

Diné Bizaad Yee Atah Naayéé' Yik'eh De  
"The Navajo Language Was Used to Defeat the Enemy"

# N7C

**Navajo Code Talkers**

Indian Marine fighters skilled in the Native lore of their ancestors and a match for the Japanese in any fight are those Navajos serving with the 3rd Marine Division Signal Unit in WWII.

## NAVAJO CODE TALKERS DAY AUGUST 14, 2025

QSO WITH	DAY	MONTH	YEAR	UTC	MHZ	RST	MODE
N2KRT	13	Jun	2025	0134	14	57	SSB

# C21MM

**NAURU**

WAZ 31 • ITU 65 • Loc RI39 • IOTA OC-031

# JWØV

## SVALBARD 2025

EU-016

by OK2WX

## AP2TN

Karachi Pakistan

# IUØPXQ

OPERATOR MAX

# N6TQ/VYØ

Flashline MARS Arctic Research Station  
Devon Island (NA-009), Qikiqtaaluk Region, Nunavut, Canada

# OHØR

From Åland Islands with the Sound of Northern Lights



## WHY POTA GARY LODGE ZL1GA, ZL1WL

Why Pota? For us POTA is “value added” to our caravanning and outdoor experience. POTA gets us out of our comfort zones, sometimes quite literally, and into places that we might otherwise not go to. I have an involvement with Landsar and AREC but POTA is for fun. I enjoy the dual challenges that POTA presents in terms of location and the portability and reliability of my gear.

Equipment. If I am in my truck I use an Icom 7100. For going QRP I have an Icom 705 which I use with Heil HTH-1 headphones, they are brilliant in windy conditions. For QRP I use the Sotabeam telescopic pole and antenna. I have a set of hand drawn aluminium poles in 1 metre lengths which I engineered myself. These fit together to make a pole that is either 6,7, or 8 metres in height. In extremely windy conditions I will use this with an Alpha Delta wire. For impromptu activations I have a Sotabeam end fed wire. There is also an ancient Kenwood whip on the back of my truck which works surprisingly well. We currently use the Polo logging programme on a tablet, backup in wet weather is a water proof notebook and pencil.

We have just spent a month on the West Coast of New Zealand basing ourselves in Westport. The West Coast in winter must be one of the country's best kept secrets. Frosty mornings followed by sunny days and clear skies. Over 4 weeks we did 53 activations. A bit of a marathon...

Favourite activations. Conservation Area Oparara River Lagoon ZLP/WC-067, this was memorable not so much for it's swamp appeal but that while we were transmitting an Australian Bittern, one of NZ's rarest birds was “booming” right beside us.

Karamea Bluff Ecological Area ZLP/WC-0054. Ignoring the wind chill factor it would be an understatement to say it was windy, but in the battle of the elements the SOTA beam came out on top.

Conservation Area Birchfield East ZLP/WC-0502 Not so much a “Where's Wally scenario as where's Gary?” This swamp was a flax forest. On being shown the SOTA map the landowner had told us that if we could find a really big fence post and an old chook house we'd be in the right spot. We found them both. Eventually. All part of the fun.

Denniston Plateau and Millerton Township, we did activations up there over several days including ZLP/WC-0460 Conservation Area Denniston, being up high amongst the old coal mining relics was like being in another world. Stunning views.

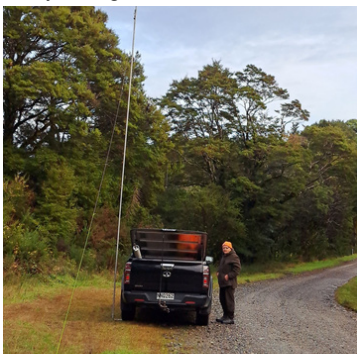
Mirror Tarn ZLL/0907 and others including Honeycombe Caves Hills ZLP/WC-0242 and Mossy Burn ZLP/WC-0517 towards Karamea.

On Matariki – Maori New Year morning we activated Cape Foulwind Recreational Reserve ZLP/WC -0437 close to Cape Foulwind Lighthouse ZLB/-011. Later we activated Cape Foulwind Beach Conservation Area ZLP/WC-0611 from the Cape Foulwind Walkway.

This turned out to be great winter trip. Not too many people around. Very few sandflies. Great scenery and we got to taste the famous West Coast Pies Wild Game pies. Special thanks to all our chasers.

We'll finish the way we started with a question. Why not POTA? Whether as a chaser or an activator come on board and have some fun.

Gary Lodge 73 ZL1GA, ZL1WL



## VK / ZL Events Calendar from 6 - 07 - 2025

- Adelaide Hills ARS **Annual Buy & Sell** - Sat. July 19<sup>th</sup> (Marion RSL VK5)
- ALARA **Anniversary Meet** - July 25<sup>th</sup> to 27<sup>th</sup> (Various around VK3)
- NCRG **Hamfest 2025** - Sun. August 31<sup>st</sup> (Bassendean VK6)
- The Redcliffe Radio Club **Car Boot Sale** - Sat. Aug. 30<sup>th</sup> (Redcliffe VK4)
- Sunshine Coast ARC **SUNFEST** - Sat. Sept. 13<sup>th</sup> (Beerwah VK4)
- SADARC **Shepparton Hamfest** - Sun. Sept. 14<sup>th</sup> (Shepparton VK3)
- VKFF **Get-Together** - October 24<sup>th</sup> to 27<sup>th</sup> (Various VK1)
- WESTLAKES **Annual Field Days** - Sun. October 26<sup>th</sup> (Teralba VK2)
- Adelaide AREG **Car Boot Sale** - Sun. October 26<sup>th</sup> (Kilburn VK5)
- Brisbane VHF Group **QTech** - Sat. November 1<sup>st</sup> (Chermside VK4)
- The SPARC **Rosebud RadioFest** - Sun November 16<sup>th</sup> (Rosebud VK3)
- Illawarra ARS **Picton Hamfest** - Sun. November 23<sup>rd</sup> (Picton VK2)

Find/post event details on FB - Hamfests Australasia Group – “Events”

<https://www.facebook.com/groups/1675116319317400/>

Hit “JOIN” to stay updated

THE PICTON SHOW SOCIETY IS PROUD TO PRESENT

NOV 23<sup>RD</sup>  
2025

# PICTON HAMFEST

COME ALONG ON SUNDAY THE 23<sup>RD</sup>  
OF NOVEMBER 2025 TO OUR FIRST  
EVER PICTON HAMFEST  
AND MAYBE BAG A BARGAIN (OR  
TWO)



ELITE COMMS , AGENTS FOR ICOM , ALINCO , YEASU MOBILE ONE WILL BE ONSITE  
KEEP AN EYE OUT FOR MARK FROM MOBILE ONE. HE WOULD BE HAPPY TO ANSWER  
QUESTIONS ABOUT HIS EXCELLENT PRODUCTS  
FOOD AVAILABLE - FOOD VANS SUCH AS GOZLEME AND CHURROS , COFFEE / TEA, BACON AND  
EGG ROLLS AND MORE!  
UNDERCOVER SEATING AREA NEAR FOOD VANS



FOLLOW PICTON ROAD (B88) TOWARDS PICTON  
CONTINUE FOR ABOUT 6 KM UNTIL YOU REACH THE ROUNDABOUT AT ARGYLE  
STREET.  
TURN LEFT ONTO ARGYLE STREET (PICTON'S MAIN STREET).  
DRIVE THROUGH THE TOWN CENTRE.  
AT THE FAR END OF ARGYLE STREET, TURN RIGHT INTO MENANGLE STREET.  
THE PICTON SHOWGROUND WILL BE ON YOUR LEFT-HAND SIDE.

★ DOG FRIENDLY 

★ GENERAL MARKETS WILL BE ON AT THE SAME TIME  
SO BRING THE WHOLE FAMILY, KIDS ARE WELCOME!

★ IF YOU WOULD LIKE TO SELL AT THE HAMFEST ,  
PLEASE CALL STEVE ON 0421 109 694.

A 6 X 6 METER SITE IS \$30.  
REGULAR ENTRY IS FREE



THE ILLABARRA AMATEUR  
RADIO SOCIETY



PICTON DISTRICT A.M.S. SOCIETY INC.



AUSTRALIAN LICENSED AMATEUR RADIO  
ASSOCIATION



ELITE COMMUNICATIONS

[www.thehamshack.co.nz](http://www.thehamshack.co.nz)

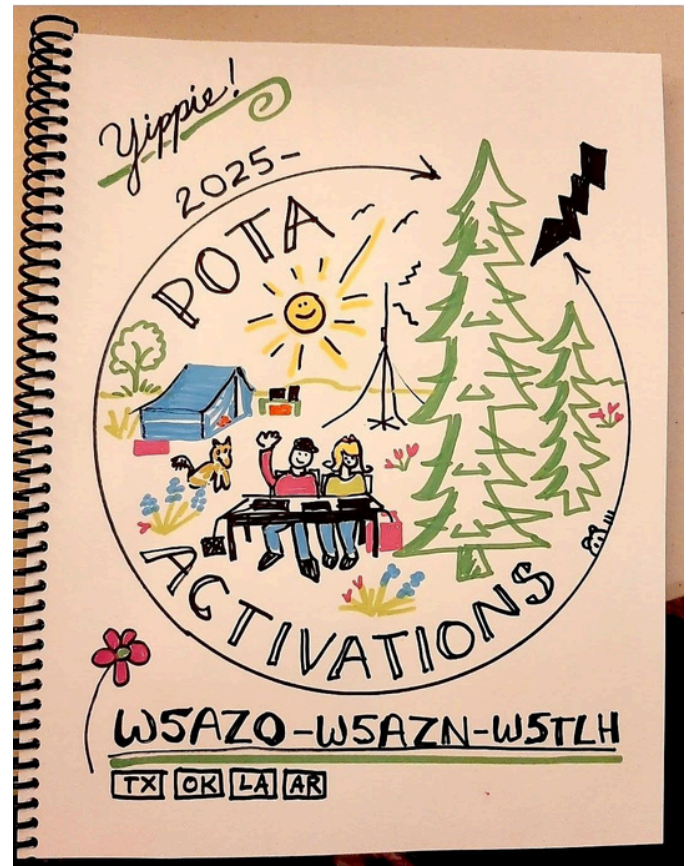
## SOME IDEAS TO MAKE YOUR RADIO ACTIVITIES MORE FUN



If this Landy doesn't do it for you - you must be dead!

I like the idea of taking the time to write a journal of you activations and if you are artistic how about some drawings.

Great idea!



If you like knobs and buttons then this Japanese WC is for you.



[www.thehamshack.co.nz](http://www.thehamshack.co.nz)

# SUGARLOAF TRANSMITTER 60 YEARS ABOVE CHRISTCHURCH

SIMON HILL ZL3SI



Have you ever wondered what is inside that concrete structure sitting on Sugarloaf high above Christchurch that's now 60 years old?

The grey, low-slung building nestles into the landscape of the Port Hills. It is an object of slate grey curiosity for local mountain bikers and dog walkers, but also for the whole city thanks to its commanding site on Sugarloaf peak. Behind the building, towering above it and bristling with antennae and drums, stands the reason this building exists in a landscape of epic skies, windswept tussock, and rocky outcrops.

The Sugarloaf communications tower stands 121 metres tall and sits at 496 metres high and has been broadcasting radio and television signals as far as the eye can see since 1965.

At the top of Sugarloaf on a fine day, the eye can see views across Christchurch and the Canterbury Plains, all the way to the Southern Alps, and as far as the Kaikoura Ranges in the north and Ashburton to the south.

But, before those signals can be beamed out, they are amplified and processed in the fortress-like building just below. Outside the wind whistles across the peaks, but inside the air hums with constantly whirring electronic equipment.

There are racks of machines with flashing lights that whirr loudly as they process the signals for various radio stations and digital television channels. The racks are bolted firmly to the floor and braced above with steel poles. The 1960s architectural style of this unusual building continues inside. Visitors are greeted with an elegant floating concrete staircase typical of the period and a plaque marking the opening of the building on October 16, 1965. But there are also signs of change. A room about the size of a community hall sits empty on the second floor. The room was once crammed with equipment and about a dozen people working shifts to ensure that one television channel went safely to air.

In a nearby room, the same job is now done by a machine about the size of a large refrigerator. The building is no longer permanently staffed because the new equipment is so much more reliable than in the 1960s.

But some of the new equipment still looks old-fashioned. The signals are sent to the tower along gleaming copper pipes that snake across the ceiling.

Workers at the building are treated to a small smoko room with a very big view that stretches from west Christchurch on the left across the Port Hills to Quail Island, Diamond Harbour and the cranes of Lyttelton port on the right.

The site is owned and managed by Kordia, a government-owned communication company that owns 50 large transmission towers across New Zealand.

Kordia sites manager Peter Best said the commanding spot was chosen because signals can generally only be sent to a place within line of sight. The tower also has microwave communication equipment that relays local radio and television signals and forms part of a national, digital network used by many clients.

The Sugarloaf building had been adapted for many technological advances over the last 60 years, "It is constantly evolving. The antennae at the top of the tower are the original ones for television. Radio was added in the mid 1980s and below that the white columns are for digital TV and were added in the early 2000s." The building has also survived natural disasters unscathed over those decades.

The Port Hills fires in 2017 and 2024 came close. A line of dead trees marking the edge of the blaze can still be seen just a few hundred metres from the building.

It was also unharmed in the 2011 Canterbury earthquakes. The only damage was a fluorescent lighting tube that fell out of its socket and smashed.

When the power went out after the earthquakes, one of two, large diesel generators kicked into action. The Volvo generator has enough diesel in metal tanks to run constantly for a week. The fire sprinkler system uses rainwater harvested from the roof and a diesel motor to maintain pressure. The building is too high in the Port Hills to rely on mains water.

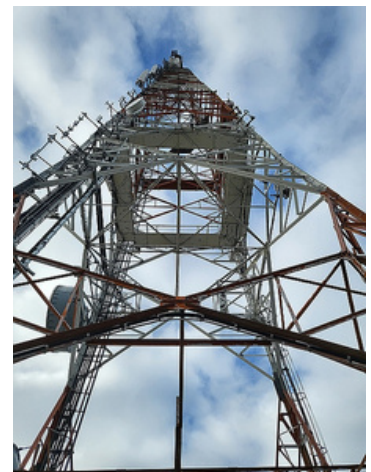
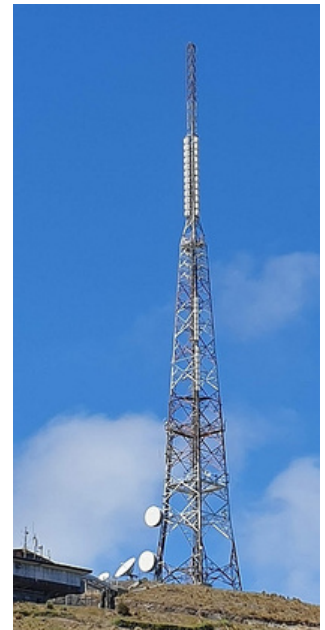
One of the reasons for the building's resistance to earthquakes lies in its deep foundations. The tower and the building are pinned into the bedrock of the Port Hills.

This building is wedded to the landscape, with tussocks growing through the asphalt at the base of the tower. Even in a building forged in the white heat of 1960s technology, nature impinges on this concrete interloper in a rugged and beautiful place.

Link to drone video

<https://www.youtube.com/watch?v=KYPVJLbDzFE>

Composed and written by Simon Hill ZL3SI with content from other publications photos by Simon Hill.





## Life Between the Bands: Adventures with ZL1HIM Parks, Lakes, Hills, Volcanoes, and SOTA

Radio is more than a hobby – it's a lifestyle that threads through my volunteering, my adventures, and my sense of service to the community. From time spent at Maketu chasing activator QSOs to quiet activations in New Zealand's parks, lakes, hills, and volcanoes, I've found myself putting parks on the air, making friendships along the way, and embracing the fact that I'm a POTAHOLIC. It's thrilling to know that a simple wire and a handful of watts can make a difference – and that's where, for me, the real magic lies.

### Chasing the Activations: ZLOTA, POTA, WWFF, and SOTA

Here in New Zealand, our own program – ZLOTA (ZL on the Air) – is the one I'm most invested in. It celebrates our unique landscapes and gives activators like me a chance to put special places on the air for hunters across the country and beyond. Whether it's a park, a lake, or even the rim of a volcano, ZLOTA ties the experience to our home turf and makes every activation feel connected to something bigger.

I also enjoy Parks on the Air (POTA) and World Wide Flora and Fauna (WWFF). POTA links me to activators and hunters around the world, while WWFF adds a conservation angle that resonates with me. But for me, ZLOTA is at the heart of it – it's ours, and it feels like carrying a bit of New Zealand radio spirit wherever I go.

There's always a bit of friendly rivalry with my mates, competing for the most contacts or who can reach the furthest station. It pushes me to keep going and makes every activation more thrilling and fun.

### My QRP Arsenal

I like to operate on a handful of watts, and that's where, for me, the real challenge – and the reward – lies. The QMX and QMX+ are both kit-built 5-watt QRP rigs, perfect for minimalist ops, while the IC-705 is my Swiss Army knife rig, and the FX-4CR is my rugged workhorse. Operating low-power forces me to pay attention to technique, antenna choice, and timing, because every contact and QSO is worth it.

At home I favour the QMX+ to chase stations here in New Zealand. I also use a Yaesu FT-2000D and an HL2 SDR transceiver, giving me flexibility depending on what and where I'm chasing. My antennas there are a hex beam, a 40m horizontal loop, and a loop on the ground – all scratch built. While chasing and activating, I've raised Inverted V's, End-Fed Half-Waves, Slopers, Random Wire End-Feds, and linked dipoles, experimenting with heights, angles, and counterpoises. I build all my own antennas and manual matching units, and I scratch-build my own ununs and baluns. It's satisfying to know the things I craft with my own hands are the ones helping to send my signal out into the world, making every watt count.

### Volunteering on the Air

Radio isn't just a hobby – it's also about service. I volunteer with Maketu Coastguard on the east coast of the Bay of Plenty, both as operational crew and Duty Officer. Out on the water, VHF radio, RADAR, RDF, and SAR TRACPLUS are lifelines. Clear, reliable communication saves lives. That discipline has shaped the way I operate everywhere else, and I try to carry those skills into my activations.

### The Alpine Fault Network

Another piece of my radio life is contributing to the Alpine Fault Network. Living in New Zealand, we're very aware of the potential impact of seismic events. Amateur radio has a role to play in resilience and response, and being part of that network gives me purpose beyond casual QSOs. Knowing that the gear I test on a hilltop, park, lake, or volcanic rim might one day serve a critical role in emergency communications ties it all together.

### Why I Keep Going

What keeps me hooked is the mix of adventure, service, and community. The camaraderie, sharing the highs and lows of activations, trading tips, and cheering each other on, adds a spark to every outing. One day I'm logging contacts from a windswept park, lake, hill, or volcanic rim, sometimes even a summit – the next I'm volunteering with Coastguard, and in between I'm part of a network preparing for the "big one" along the Alpine Fault.

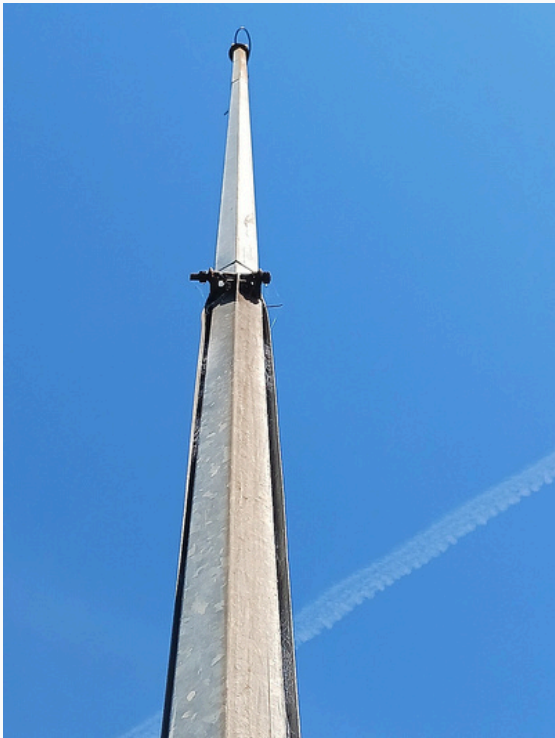
73's 44  
Ian  
ZL1HIM





# CLASSIFIED

## FOR SALE



Commercially made centre pivot tower 10 m high/long including 4 x new 1m long mounting bolts with nuts. Top plate includes bolts at standard Yaesu rotator mount centres.

Great condition  
Reason for selling I have found a 24m lattice tower that I am going to install.

Cost \$2,395 (it is on the ground but you will need a haib and truck to relocate)

Location - Loburn, Canterbury

Greg ZL1GUD@proton.me  
+64 221 229 240

## EARTHQUAKE PROOF YOUR HOME



Survival Kits, Grab Bags and Emergency Preparedness Gear Designed for New Zealand Conditions. Home of the 20 Year Shelf-Life Emergency Food Rations and Survival Food Rations

<https://www.next72hours.com/>

WANTED nothing this month

[www.thehamshack.co.nz](http://www.thehamshack.co.nz)