

ST-4003W is an Windows software that enables you to easily set the internal clock of the various Icom products by connecting the PC and the product with a USB cable.

## System requirements

(As of May 2023)

### Operating system

Microsoft Windows 11 (64 bit)

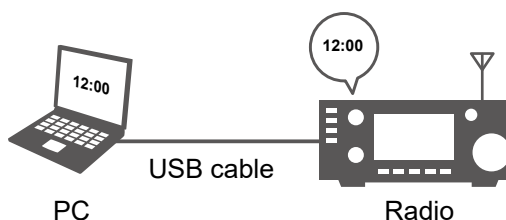
Microsoft Windows 10 (32/64 bit)

① Except for Windows on ARM

① This instruction document is based on ST-4003W version 1.00 and Windows 10. Display indications may differ, depending on the PC's OS.

## Compatible radios and cables

With this software, you can set the internal clock of the Icom radios listed below. Connect your PC to your radio through a USB cable.



Compatible radio	Radio's USB port type	Required item
IC-705	Micro-B	Purchase the proper USB cable that matches your device's USB port. *You can also use the supplied USB cable.
IC-7100*	Mini-B	
IC-7300	Type-B	
IC-7600	Type-B	
IC-7610	Type-B	
IC-7850/IC-7851	Type-B	
IC-9700	Type-B	

**NOTE:** Download the USB driver and the installation guide from the Icom website.

Enter the radio's model name into the Search box in the site.

### Icom website

<https://www.icomjapan.com/support/>

Icom and the Icom logo are registered trademarks of Icom Incorporated (Japan) in Japan, the United States, the United Kingdom, Germany, France, Spain, Russia, Australia, New Zealand, and/or other countries.

Microsoft and Windows are trademarks of the Microsoft group of companies.

All other products or brands are registered trademarks or trademarks of their respective holders.

# Installation

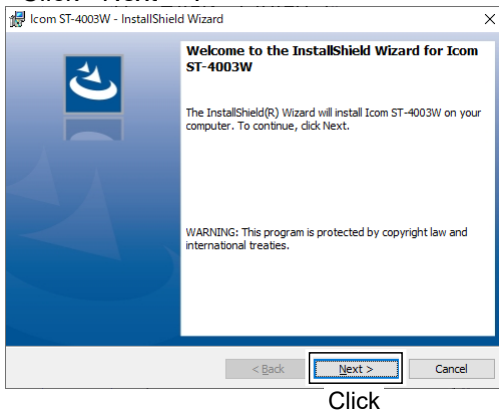
## Before the installation:

- Confirm Windows has completed its startup.
- Sign in as an **administrator**.
- Be sure no other applications are running.

1. Unzip the file downloaded from the Icom website.  
([https://www.icomjapan.com/support/firmware\\_driver/](https://www.icomjapan.com/support/firmware_driver/))
2. Double click the executable file in the unzipped folder.  
① When “User Account Control” is displayed, click <Yes> to continue.
3. Select a language, and then click <OK>.

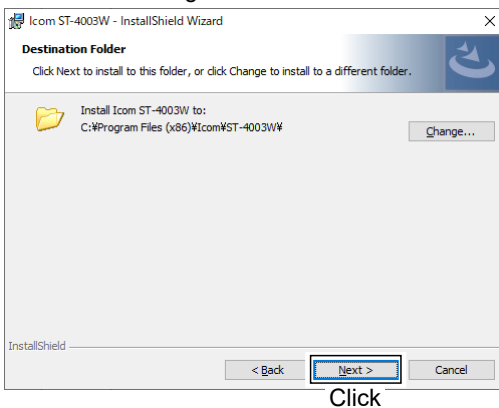


4. Click <Next >>.

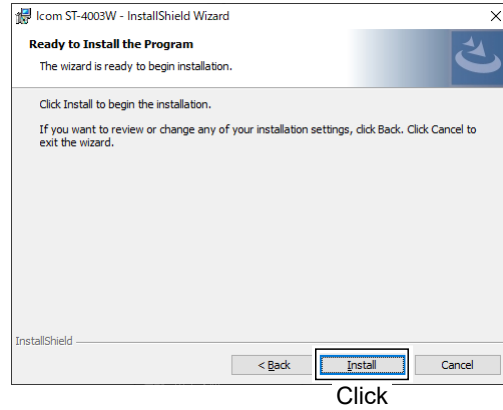


5. Click <Next >>.

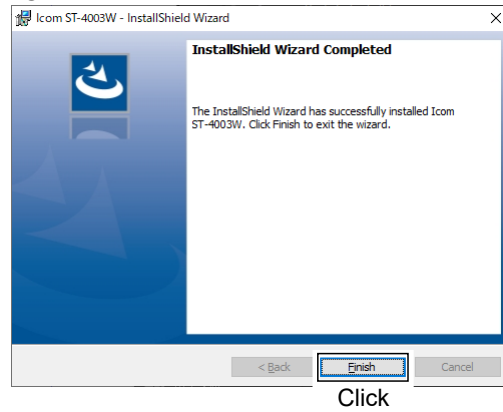
① To select another destination folder, click <Change...> before clicking <Next >>.



6. Click <Install>.



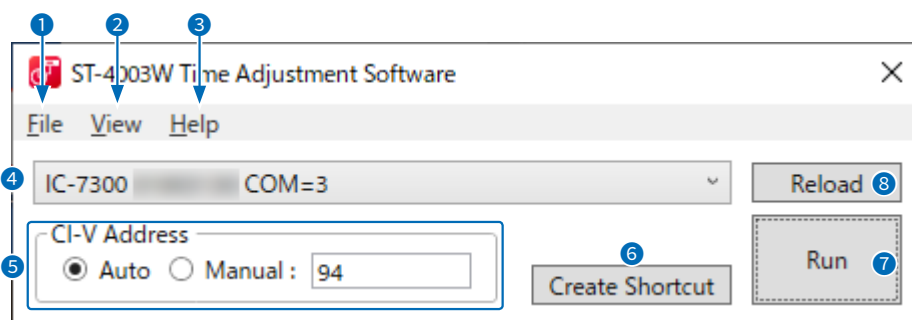
7. Click <Finish>.



① “Icom ST-4003W Time Adjustment” is added to the Windows Start menu, and a shortcut icon is created on the desktop.

**NOTE:** To uninstall the application, use the “Apps & features” in the “System” menu.  
(Start > Settings > Apps > Apps & features)

## Operating screen



### 1 File

Exit: Click to close the software.

### 2 View

Language: Click to select the language to be displayed on the Language list screen.

### 3 Help

About: Click to open the About window and display the version number.

### 4 Radio list

Select the radio for which you want to set the time.  
① The radio model name, the serial number, and the COM port number are displayed.

### 5 CI-V Address

Select whether to automatically detect the CI-V address or manually set it.

① When the CI-V address of the radio is the default setting, or the Transceive function is set to ON, the CI-V address is automatically detected.

① If you select "Manual," enter the CI-V address into the text box.

Selectable range: 01 to DF

### 6 Create Shortcut

Click to create a shortcut icon on the desktop. You can launch the software with the following presettings from the created shortcut.

Preset items: Radio model name  
Serial number  
CI-V Address (If selected "Manual")

### 7 Run

Click to set the radio time to match your PC.

### 8 Reload

Click to reload the radio list.

## Operation

1. Open the ST-4003W.
2. Click <Run>.
  - The date and time are sent from your PC to the radio.
  - When successful, "The date and time settings have been completed." is displayed.  
① Depending on the radio, it may take about 1 minute to set the date and time. Even if you cancel the setting while "Sets the seconds." is displayed, the radio's approximate time ( $\pm 1$  minute) has been set.
3. Click <OK> to close the window.

**NOTE:** You cannot make the date and time settings under the following conditions.

#### For the radio:

- Turning OFF the radio.
- In the Standby mode.
- Programming the setting data.
- Updating the firmware.
- Importing or exporting a CSV format file.
- Saving the settings.
- Measuring the antenna SWR.

#### For the PC:

- If the CI-V address for the radio is not correct.
- The USB driver is not installed properly.
- The USB cable is not firmly connected.